

Cryptochrome 1 antibody



Catalog Number: 109588

Product name

Cryptochrome 1 antibody

IHC: 1:20-1:200

IF: 1:10-1:100

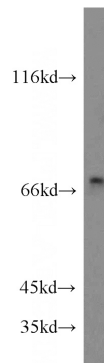
Specificity

Human, Mouse, Rat; other species not tested.

Antibody description

Cryptochrome 1 Rabbit Polyclonal antibody. Positive IF detected in HeLa cells, MCF-7 cells. Positive IHC detected in human testis tissue, human breast cancer tissue. Positive WB detected in Y79 cells, rat testis tissue. Observed molecular weight by Western-blot: 70 kDa

Validations



Preparation

This antibody was obtained by immunization of Cryptochrome 1 recombinant protein (Accession Number: NM_004075). Purification method: Antigen affinity purified.

Y79 cells were subjected to SDS PAGE followed by western blot with Catalog No:109588(CRY1 antibody) at dilution of 1:1000

Formulation

PBS with 0.02% sodium azide and 50% glycerol pH 7.3.

Storage

Store at -20°C. DO NOT ALIQUOT

Clonality

Polyclonal

Ig Type

Rabbit IgG

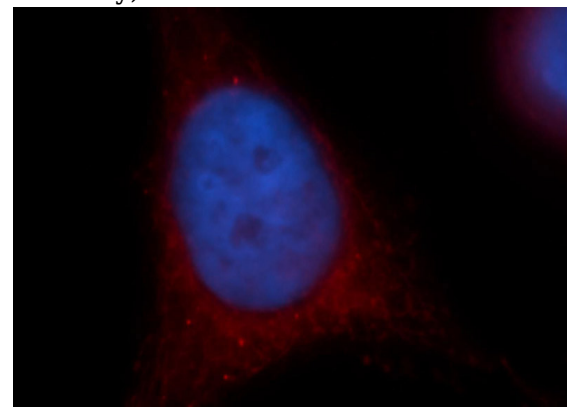
Applications

ELISA, WB, IF, IHC

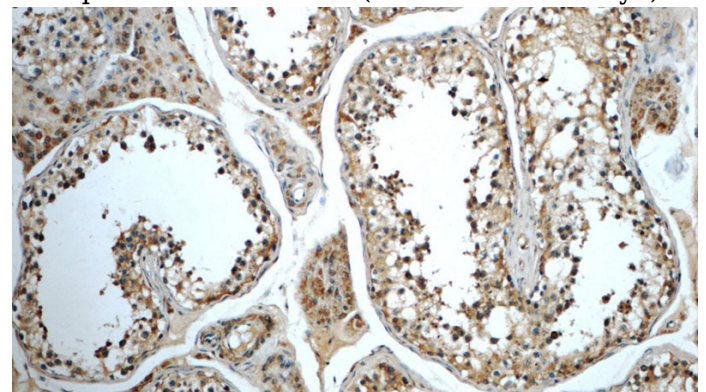
Dilutions

Recommended Dilution:

WB: 1:500-1:5000



Immunofluorescent analysis of HeLa cells, using CRY1 antibody Catalog No:109588 at 1:25 dilution and Rhodamine-labeled goat anti-rabbit IgG (red). Blue pseudocolor = DAPI (fluorescent DNA dye).

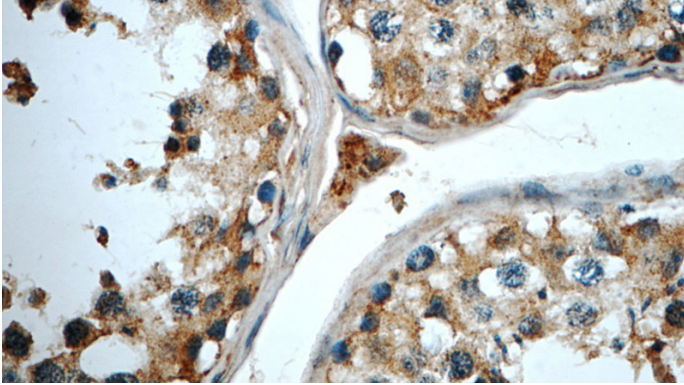


Immunohistochemistry of paraffin-embedded

Cryptochrome 1 antibody

Catalog Number: 109588

human testis tissue slide using Catalog
No:109588(CRY1 Antibody) at dilution of 1:50
(under 10x lens)



Immunohistochemistry of paraffin-embedded
human testis tissue slide using Catalog
No:109588(CRY1 Antibody) at dilution of 1:50
(under 40x lens)