

# CRMP2 antibody

Catalog Number: 109570

## General Information

### Product name:

CRMP2 antibody

### Immunogen:

### Applications:

ELISA, WB, IHC, IF

### Specificity:

Human, Mouse, Rat; other species not tested.

### Antibody description:

CRMP2 Rabbit Polyclonal antibody. Positive IHC detected in human colon cancer tissue. Positive IF detected in HepG2 cells. Positive WB detected in human heart tissue. Observed molecular weight by Western-blot: 62 kDa

## Properties

### Preparation:

This antibody was obtained by immunization of CRMP2 recombinant protein (Accession Number: BC067109). Purification method: Antigen affinity purified.

### Formulation:

PBS with 0.02% sodium azide and 50% glycerol pH 7.3.

### Storage:

Store at -20°C. DO NOT ALIQUOT

### Clonality:

Polyclonal

**Ig Type:** Rabbit IgG

## Applications

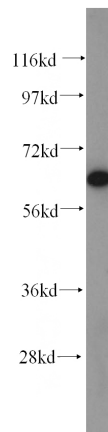
Recommended Dilution:

WB: 1:200-1:1000

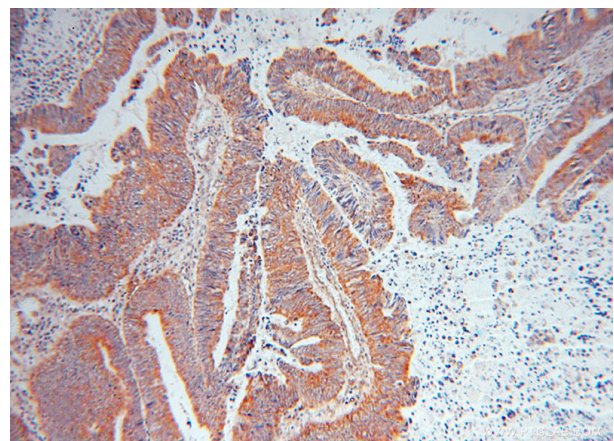
IHC: 1:20-1:200

IF: 1:20-1:200

## Validations



human heart tissue were subjected to SDS PAGE followed by western blot with Catalog No:109570(DPYSL2 antibody) at dilution of 1:300

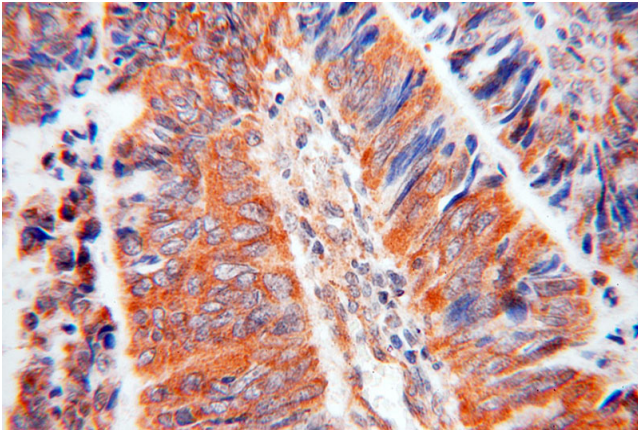


Immunohistochemical of paraffin-embedded human colon cancer using Catalog No:109570(DPYSL2 antibody) at dilution of 1:50 (under 10x lens)

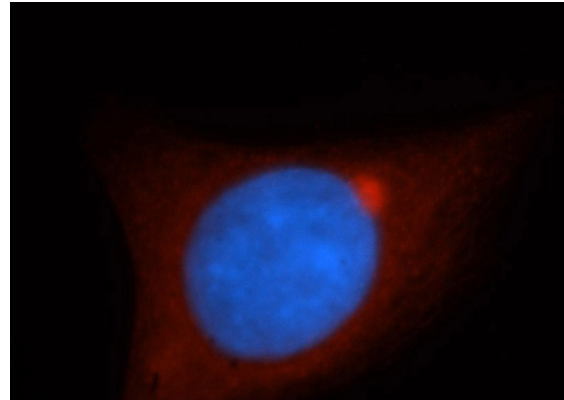
# CRMP2 antibody

Catalog Number: 109570

---



Immunohistochemical of paraffin-embedded human colon cancer using Catalog No:109570(DPYSL2 antibody) at dilution of 1:50 (under 40x lens)



Immunofluorescent analysis of HepG2 cells, using DPYSL2 antibody Catalog No:109570 at 1:50 dilution and Rhodamine-labeled goat anti-rabbit IgG (red). Blue pseudocolor = DAPI (fluorescent DNA dye).