

Creatine kinase B type antibody



Catalog Number: 109543

Product name

Creatine kinase B type antibody

Immunogen

Specificity

Human, Mouse, Rat; other species not tested.

Antibody description

Creatine kinase B type Rabbit Polyclonal antibody. Positive IHC detected in human colon cancer tissue. Positive WB detected in human brain tissue, human colon tissue, human kidney tissue, mouse brain tissue, mouse colon tissue, rat brain tissue. Positive IP detected in mouse brain tissue. Observed molecular weight by Western-blot: 42 kDa

Preparation

This antibody was obtained by immunization of Creatine kinase B type recombinant protein (Accession Number: NM_001823). Purification method: Antigen affinity purified.

Formulation

PBS with 0.02% sodium azide and 50% glycerol pH 7.3.

Storage

Store at -20°C. DO NOT ALIQUOT

Clonality

Polyclonal

Ig Type

Rabbit IgG

Applications

ELISA, WB, IHC, IP

Dilutions

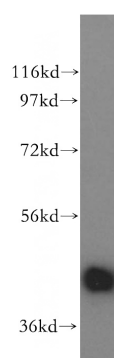
Recommended Dilution:

WB: 1:500-1:5000

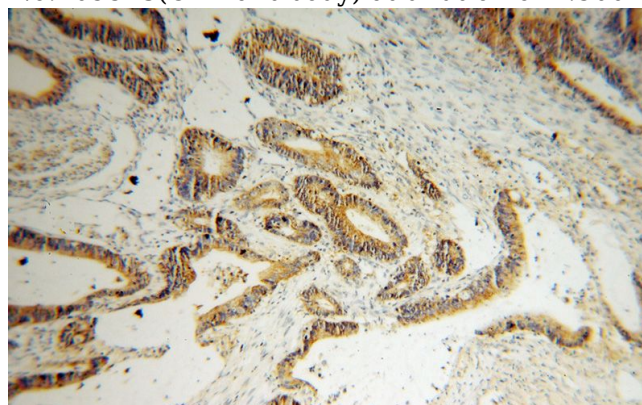
IP: 1:200-1:2000

IHC: 1:20-1:200

Validations



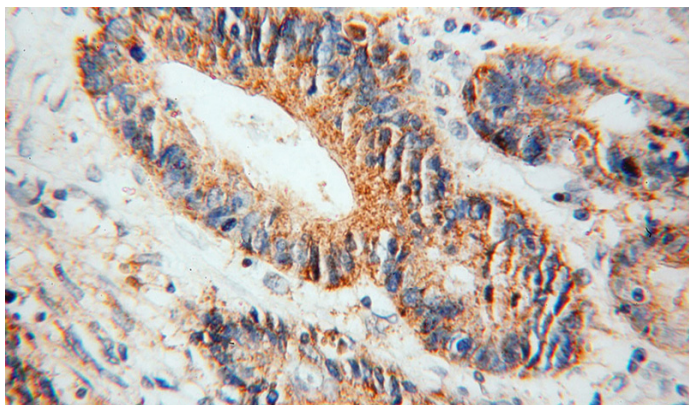
human brain tissue were subjected to SDS PAGE followed by western blot with Catalog No:109543(CKB antibody) at dilution of 1:500



Immunohistochemical of paraffin-embedded human colon cancer using Catalog No:109543(CKB antibody) at dilution of 1:100 (under 10x lens)

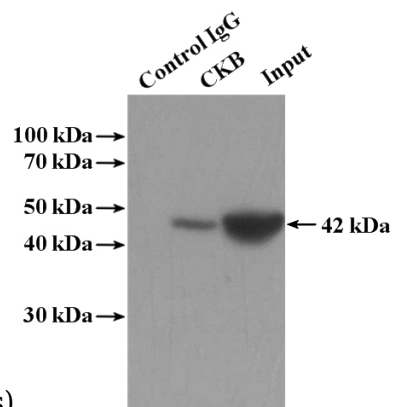
Creatine kinase B type antibody

Catalog Number: 109543



(under 40x lens)

Immunohistochemical of paraffin-embedded human colon cancer using Catalog No:109543(CKB antibody) at dilution of 1:100



IP Result of anti-CKB (IP:Catalog No:109543, 4ug; Detection:Catalog No:109543 1:500) with mouse brain tissue lysate 4000ug.