

# CRCP antibody

Catalog Number: 109540

## Product name

CRCP antibody

IP: 1:500-1:5000

IHC: 1:20-1:200

## Specificity

Human, Mouse, Rat; other species not tested.

## Antibody description

CRCP Rabbit Polyclonal antibody. Positive WB detected in Raji cells, HeLa cells, human testis tissue, MCF7 cells. Positive IP detected in Raji cells. Positive FC detected in Raji cells. Positive IHC detected in human testis tissue. Observed molecular weight by Western-blot: 20 kDa

## Preparation

This antibody was obtained by immunization of CRCP recombinant protein (Accession Number: NM\_001040647). Purification method: Antigen affinity purified.

## Formulation

PBS with 0.02% sodium azide and 50% glycerol pH 7.3.

## Storage

Store at -20°C. DO NOT ALIQUOT

## Clonality

Polyclonal

## Ig Type

Rabbit IgG

## Applications

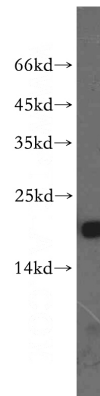
ELISA, WB, IHC, FC, IP

## Dilutions

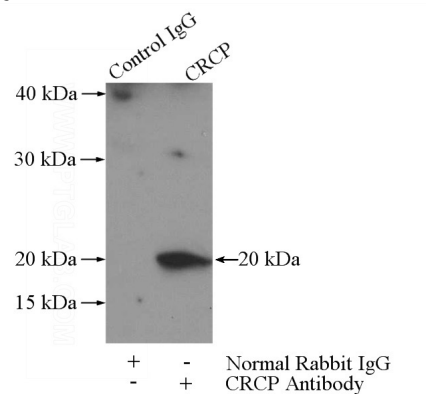
Recommended Dilution:

WB: 1:1000-1:10000

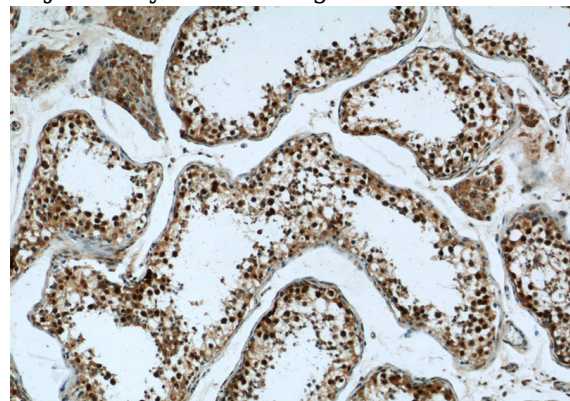
## Validations



Raji cells were subjected to SDS PAGE followed by western blot with Catalog No:109540(CRCP antibody) at dilution of 1:1000



IP Result of anti-CRCP (IP:Catalog No:109540, 3ug; Detection:Catalog No:109540 1:1000) with Raji cells lysate 2800ug.

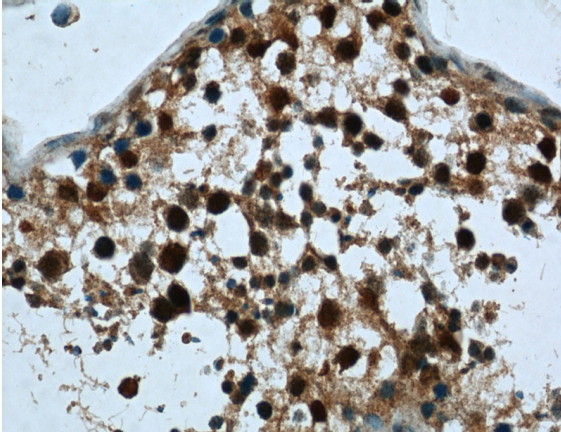


Immunohistochemistry of paraffin-embedded human testis tissue slide using Catalog

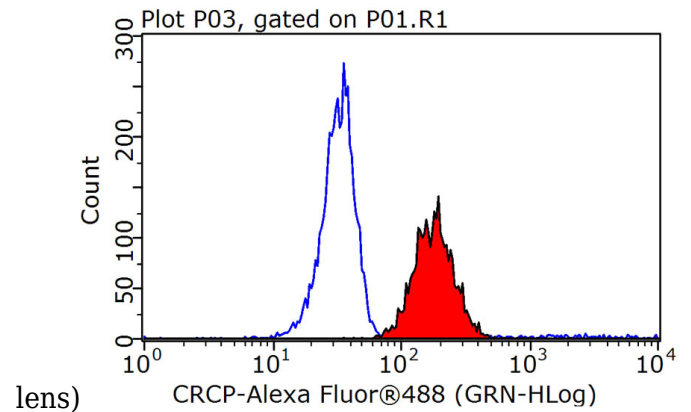
# CRCP antibody

Catalog Number: 109540

No:109540(CRCP Antibody) at dilution of 1:50  
(under 10x lens)



Immunohistochemistry of paraffin-embedded human testis tissue slide using Catalog No:109540 (CRCP Antibody) at dilution of 1:50 (under 40x



$1 \times 10^6$  Raji cells were stained with 0.2ug CRCP antibody (Catalog No:109540, red) and control antibody (blue). Fixed with 90% MeOH blocked with 3% BSA (30 min). Alexa Fluor 488-conjugated AffiniPure Goat Anti-Rabbit IgG(H+L) with dilution 1:1000.