

COX20 antibody

Catalog Number: 109489

Product name

COX20 antibody

IHC: 1:20-1:200

IF: 1:20-1:200

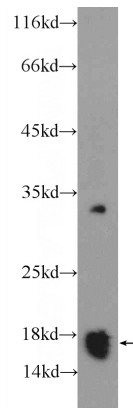
Specificity

Human; other species not tested.

Validations

Antibody description

COX20 Rabbit Polyclonal antibody. Positive IHC detected in human prostate cancer tissue, human endometrial cancer tissue. Positive IF detected in HeLa cells, PC-3 cells. Positive WB detected in PC-3 cells. Observed molecular weight by Western-blot: ~16 kDa



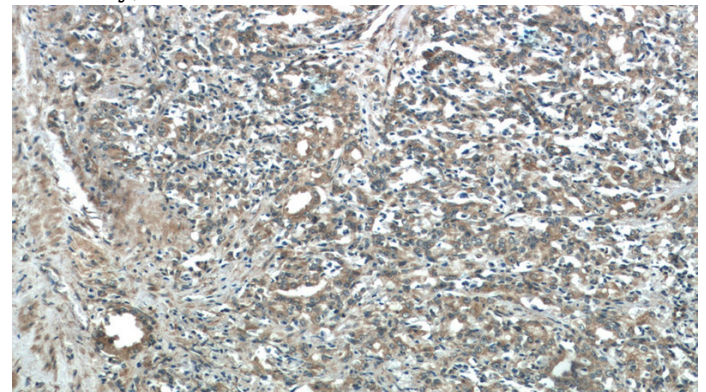
Preparation

This antibody was obtained by immunization of COX20 recombinant protein (Accession Number: NM_198076). Purification method: Antigen affinity purified.

PC-3 cells were subjected to SDS PAGE followed by western blot with Catalog No:109489(FAM36A Antibody) at dilution of 1:600

Formulation

PBS with 0.1% sodium azide and 50% glycerol pH 7.3.



Storage

Store at -20°C. DO NOT ALIQUOT

Clonality

Polyclonal

Immunohistochemistry of paraffin-embedded human prostate cancer tissue slide using Catalog No:109489(FAM36A Antibody) at dilution of 1:50 (under 10x lens)

Ig Type

Rabbit IgG

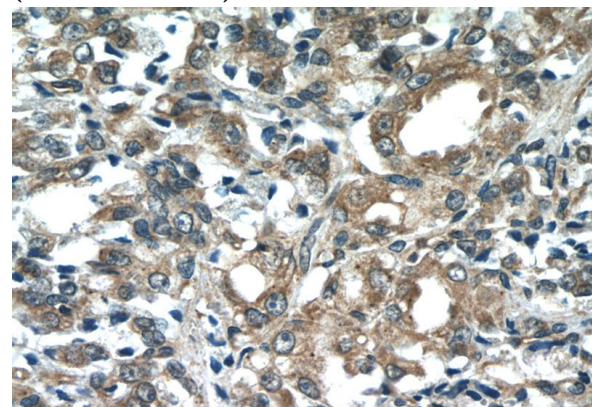
Applications

ELISA, WB, IHC, IF

Dilutions

Recommended Dilution:

WB: 1:200-1:2000

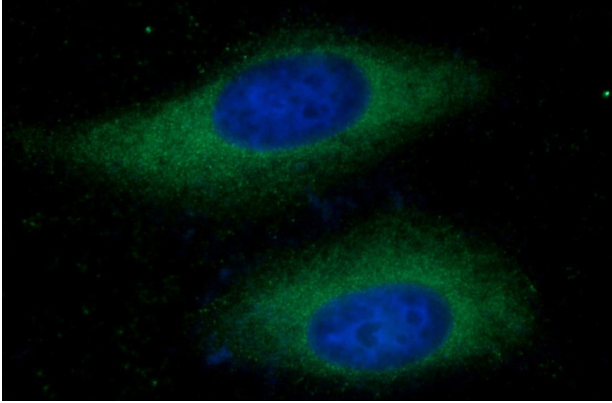


Immunohistochemistry of paraffin-embedded

COX20 antibody

Catalog Number: 109489

human prostate cancer tissue slide using Catalog No:109489(FAM36A Antibody) at dilution of 1:50 (under 40x lens)



Immunofluorescent analysis of HeLa cells using Catalog No:109489(FAM36A Antibody) at dilution of 1:50 and Alexa Fluor 488-conjugated AffiniPure Goat Anti-Rabbit IgG(H+L)