

CORO6 antibody



Catalog Number: 109477

Product name

CORO6 antibody

Specificity

Human, Mouse, Rat; other species not tested.

Antibody description

CORO6 Rabbit Polyclonal antibody. Positive WB detected in rat skeletal muscle tissue, mouse brain tissue, mouse skeletal muscle tissue. Observed molecular weight by Western-blot: 55-60 kDa

Preparation

This antibody was obtained by immunization of CORO6 recombinant protein (Accession Number: NM_001351301). Purification method: Antigen affinity purified.

Formulation

PBS with 0.1% sodium azide and 50% glycerol pH 7.3.

Storage

Store at -20°C. DO NOT ALIQUOT

Clonality

Polyclonal

Ig Type

Rabbit IgG

Applications

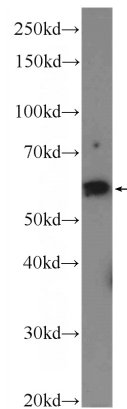
ELISA, WB

Dilutions

Recommended Dilution:

WB: 1:200-1:2000

Validations



rat skeletal muscle tissue were subjected to SDS PAGE followed by western blot with Catalog No:109477(CORO6 Antibody) at dilution of 1:600