

CLIC3 antibody



Catalog Number: 109389

Product name

CLIC3 antibody

IHC: 1:20-1:200

IF: 1:10-1:100

Specificity

Human, Mouse, Rat; other species not tested.

Antibody description

CLIC3 Rabbit Polyclonal antibody. Positive IHC detected in human placenta tissue. Positive IF detected in MCF-7 cells. Positive WB detected in HeLa cells. Observed molecular weight by Western-blot: 27-32 kDa

Preparation

This antibody was obtained by immunization of CLIC3 recombinant protein (Accession Number: NM_004669). Purification method: Antigen affinity purified.

Formulation

PBS with 0.02% sodium azide and 50% glycerol pH 7.3.

Storage

Store at -20°C. DO NOT ALIQUOT

Clonality

Polyclonal

Ig Type

Rabbit IgG

Applications

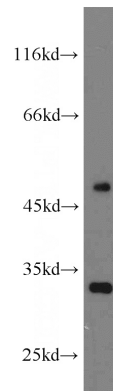
ELISA, WB, IHC, IF

Dilutions

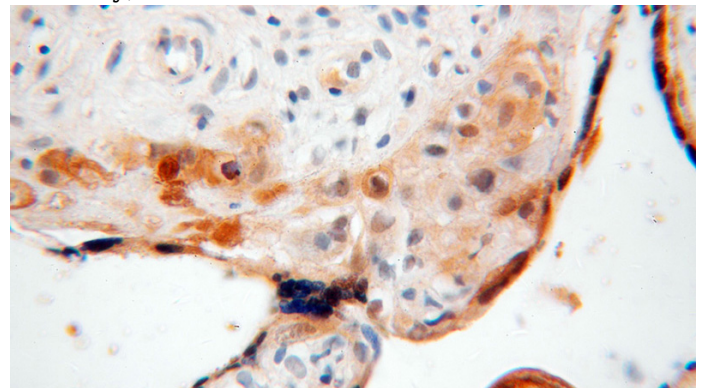
Recommended Dilution:

WB: 1:200-1:2000

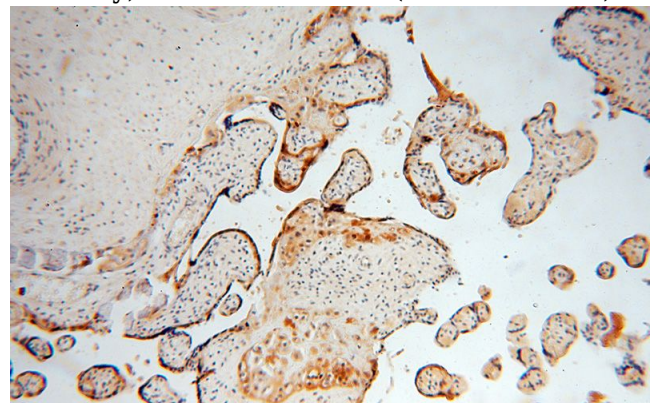
Validations



HeLa cells were subjected to SDS PAGE followed by western blot with Catalog No:109389(CLIC3 antibody) at dilution of 1:800



Immunohistochemical of paraffin-embedded human placenta using Catalog No:109389(CLIC3 antibody) at dilution of 1:50 (under 40x lens)



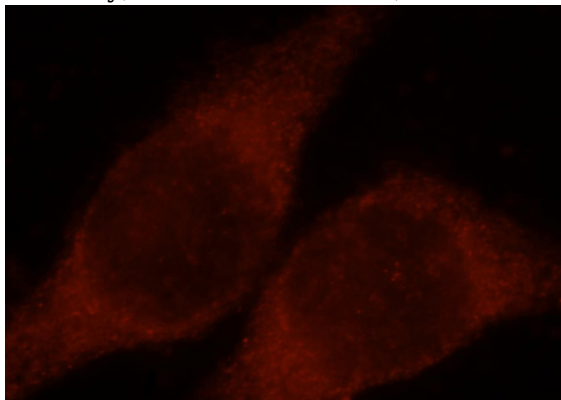
Immunohistochemical of paraffin-embedded human placenta using Catalog No:109389(CLIC3 antibody) at dilution of 1:50 (under 40x lens)

CLIC3 antibody



Catalog Number: 109389

antibody) at dilution of 1:50 (under 10x lens)



Immunofluorescent analysis of MCF-7 cells, using CLIC3 antibody Catalog No:109389 at 1:25 dilution and Rhodamine-labeled goat anti-rabbit IgG (red).