

Cofilin antibody



Catalog Number: 109365

Product name

Cofilin antibody

Recommended Dilution:

WB: 1:200-1:2000

Specificity

Human, Mouse, Rat; other species not tested.

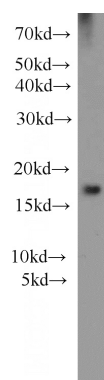
IHC: 1:20-1:200

IF: 1:20-1:200

Antibody description

Cofilin Rabbit Polyclonal antibody. Positive WB detected in mouse brain tissue, human brain tissue, human skin tissue, MCF7 cells, NIH/3T3 cells, rat brain tissue. Positive IHC detected in human cervical cancer tissue, human heart tissue, human lung cancer tissue. Positive IF detected in NIH/3T3 cells. Observed molecular weight by Western-blot: 18 kDa

Validations



Preparation

This antibody was obtained by immunization of Cofilin recombinant protein (Accession Number: NM_005507). Purification method: Antigen affinity purified.

mouse brain tissue were subjected to SDS PAGE followed by western blot with Catalog No:109365(CFL1 antibody) at dilution of 1:1000

Formulation

PBS with 0.1% sodium azide and 50% glycerol pH 7.3.

Storage

Store at -20°C. DO NOT ALIQUOT

Clonality

Polyclonal

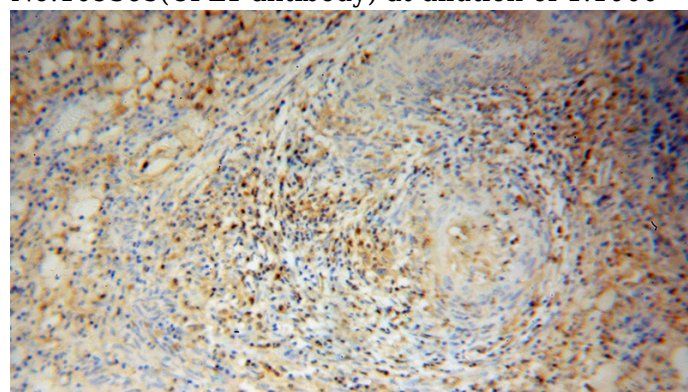
Ig Type

Rabbit IgG

Applications

ELISA, WB, IHC, IF

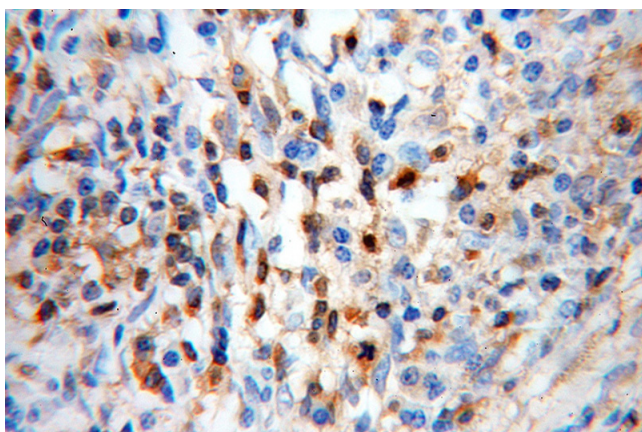
Dilutions



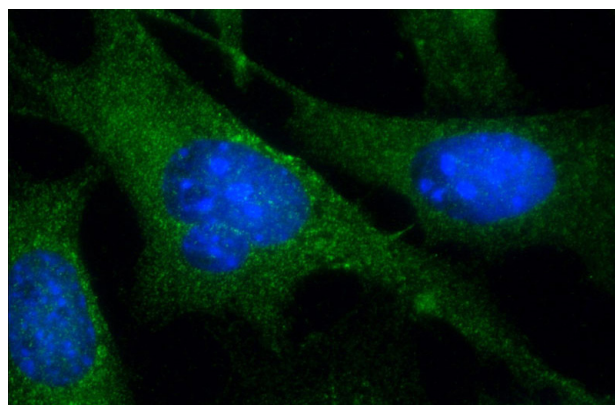
Immunohistochemical of paraffin-embedded human cervical cancer using Catalog No:109365(CFL1 antibody) at dilution of 1:50 (under 10x lens)

Cofilin antibody

Catalog Number: 109365



Immunohistochemical of paraffin-embedded human cervical cancer using Catalog No:109365(CFL1 antibody) at dilution of 1:50 (under 40x lens)



Immunofluorescent analysis of (-20oc Ethanol) fixed NIH/3T3 cells using Catalog No:109365(Cofilin Antibody) at dilution of 1:50 and Alexa Fluor 488-conjugated AffiniPure Goat Anti-Rabbit IgG(H+L)