

Claudin 1 antibody



Catalog Number: 109336

Product name

Claudin 1 antibody

Specificity

Human, Mouse; other species not tested.

Antibody description

Claudin 1 Rabbit Polyclonal antibody. Positive WB detected in mouse skin tissue, mouse liver tissue, mouse thymus tissue. Positive IHC detected in human skin tissue, human cervical cancer tissue, human liver tissue, human oesophagus cancer tissue, human skin cancer tissue, mouse colon tissue. Observed molecular weight by Western-blot: 23-25 kDa

Preparation

This antibody was obtained by immunization of Claudin 1 recombinant protein (Accession Number: NM_021101). Purification method: Antigen affinity purified.

Formulation

PBS with 0.02% sodium azide and 50% glycerol pH 7.3.

Storage

Store at -20°C. DO NOT ALIQUOT

Clonality

Polyclonal

Ig Type

Rabbit IgG

Applications

ELISA, IHC, WB

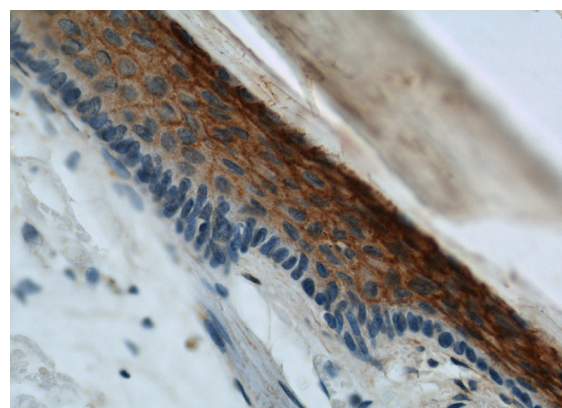
Dilutions

Recommended Dilution:

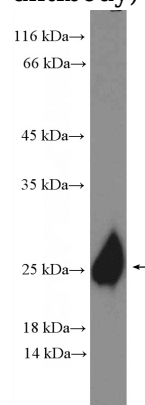
WB: 1:200-1:2000

IHC: 1:20-1:200

Validations



Immunohistochemical of paraffin-embedded human skin using Catalog No:109336(CLDN1 antibody) at dilution of 1:50 (under 40x lens)



mouse skin tissue were subjected to SDS PAGE followed by western blot with Catalog No:109336(Claudin 1 Antibody) at dilution of 1:600