

Citrate synthase antibody



Catalog Number: 109325

Product name

Citrate synthase antibody

WB: 1:1000-1:10000

IP: 1:500-1:5000

Specificity

Human, Mouse, Rat; other species not tested.

IHC: 1:20-1:200

IF: 1:10-1:100

Antibody description

Citrate synthase Rabbit Polyclonal antibody. Positive IF detected in HepG2 cells. Positive IHC detected in human heart tissue. Positive WB detected in HEK-293 cells, HeLa cells, mouse skeletal muscle tissue. Positive IP detected in mouse heart tissue. Observed molecular weight by Western-blot: 50 kDa

Preparation

This antibody was obtained by immunization of Citrate synthase recombinant protein (Accession Number: NM_004077). Purification method: Antigen affinity purified.

Formulation

PBS with 0.02% sodium azide and 50% glycerol pH 7.3.

Storage

Store at -20°C. DO NOT ALIQUOT

Clonality

Polyclonal

Ig Type

Rabbit IgG

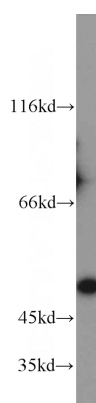
Applications

ELISA, WB, IHC, IF, IP

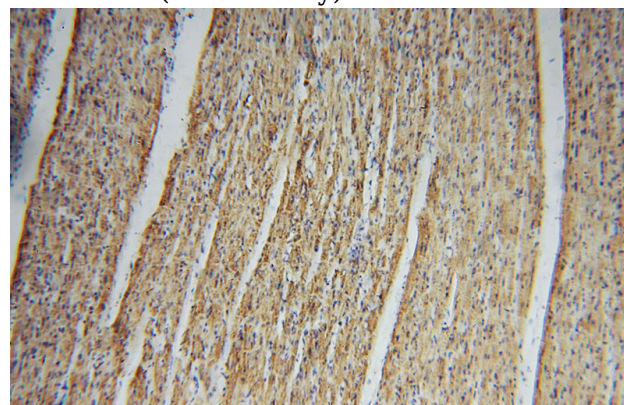
Dilutions

Recommended Dilution:

Validations



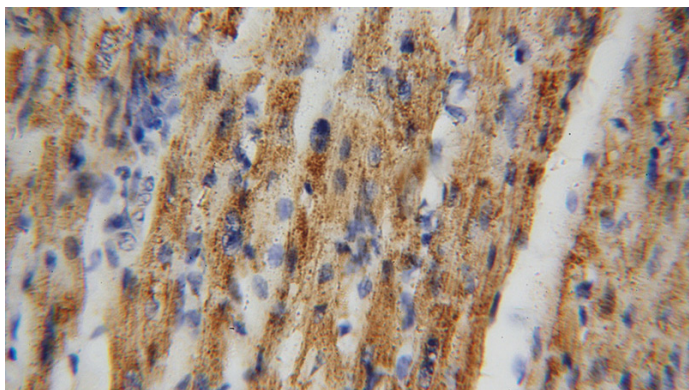
HEK-293 cells were subjected to SDS PAGE followed by western blot with Catalog No:109325(CS antibody) at dilution of 1:2000



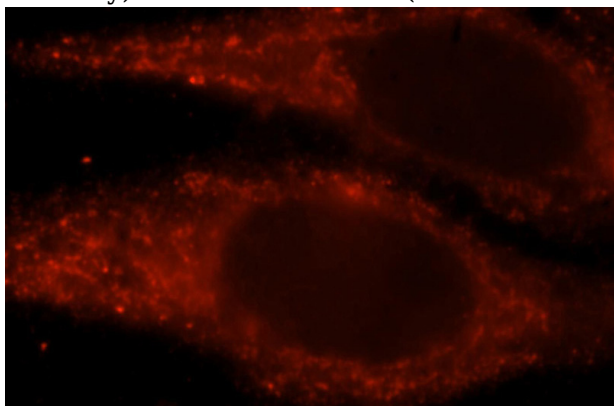
Immunohistochemical of paraffin-embedded human heart using Catalog No:109325(CS antibody) at dilution of 1:100 (under 10x lens)

Citrate synthase antibody

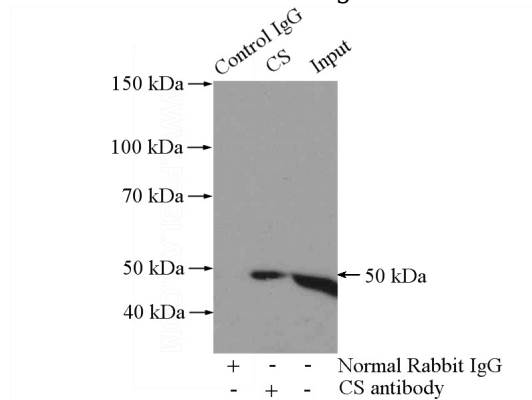
Catalog Number: 109325



Immunohistochemical of paraffin-embedded human heart using Catalog No:109325(CS antibody) at dilution of 1:100 (under 40x lens)



Immunofluorescent analysis of HepG2 cells, using CS antibody Catalog No:109325 at 1:25 dilution and Rhodamine-labeled goat anti-rabbit IgG (red).



IP Result of anti-CS (IP:Catalog No:109325, 4ug; Detection:Catalog No:109325 1:1000) with mouse heart tissue lysate 3200ug.