

# CD33 antibody



Catalog Number: 109028

## Product name

CD33 antibody

Recommended Dilution:

WB: 1:200-1:2000

## Specificity

Human; other species not tested.

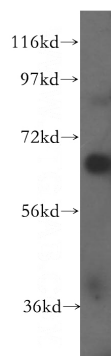
IHC: 1:20-1:200

IF: 1:10-1:100

## Antibody description

CD33 Rabbit Polyclonal antibody. Positive WB detected in K-562 cells. Positive IF detected in HepG2 cells. Positive IHC detected in human spleen tissue, human brain tissue, human kidney tissue, human lung tissue, human ovary tissue, human placenta tissue, human testis tissue. Observed molecular weight by Western-blot: 67 kDa

## Validations



## Preparation

This antibody was obtained by immunization of CD33 recombinant protein (Accession Number: NM\_001772). Purification method: Antigen affinity purified.

K-562 cells were subjected to SDS PAGE followed by western blot with Catalog No:109028(CD33 antibody) at dilution of 1:600

## Formulation

PBS with 0.02% sodium azide and 50% glycerol pH 7.3.

## Storage

Store at -20°C. DO NOT ALIQUOT

## Clonality

Polyclonal

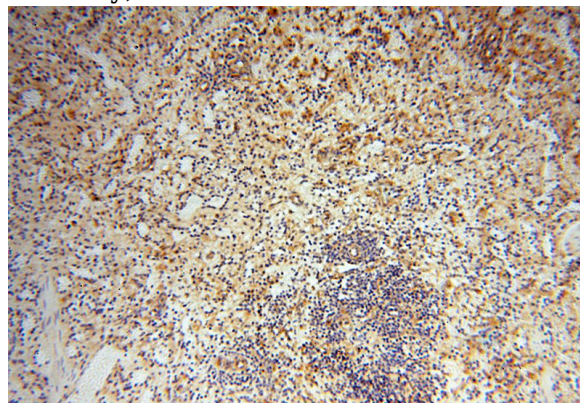
## Ig Type

Rabbit IgG

## Applications

ELISA, IHC, IF, WB

## Dilutions

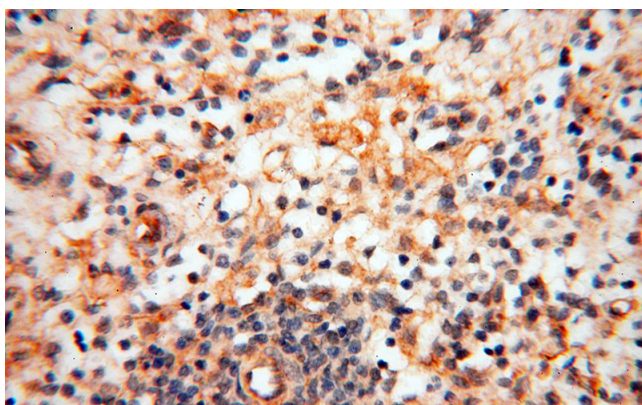


Immunohistochemical of paraffin-embedded human spleen using Catalog No:109028(CD33 antibody) at dilution of 1:100 (under 10x lens)

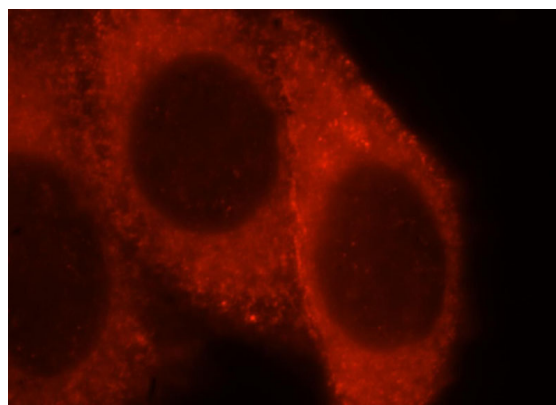
# CD33 antibody

Catalog Number: 109028

---



Immunohistochemical of paraffin-embedded human spleen using Catalog No:109028(CD33 antibody) at dilution of 1:100 (under 40x lens)



Immunofluorescent analysis of HepG2 cells, using CD33 antibody Catalog No:109028 at 1:25 dilution and Rhodamine-labeled goat anti-rabbit IgG (red).