

calreticulin antibody



Catalog Number: 108908

Product name

calreticulin antibody

Specificity

Human, Rat, Mouse; other species not tested.

Antibody description

calreticulin Rabbit Polyclonal antibody. Positive WB detected in NIH/3T3 cells, COLO 320 cells, HeLa cells, HL-60 cells, human skeletal muscle tissue, MCF7 cells, mouse brain tissue. Positive IHC detected in human thyroid tissue, human colon cancer tissue, human ovary tumor tissue, human skeletal muscle tissue. Positive IF detected in NIH/3T3 cells. Observed molecular weight by Western-blot: 60 kDa

Preparation

This antibody was obtained by immunization of calreticulin recombinant protein (Accession Number: NM_004343). Purification method: Antigen affinity purified.

Formulation

PBS with 0.1% sodium azide and 50% glycerol pH 7.3.

Storage

Store at -20°C. DO NOT ALIQUOT

Clonality

Polyclonal

Ig Type

Rabbit IgG

Applications

ELISA, WB, IF, IHC

Dilutions

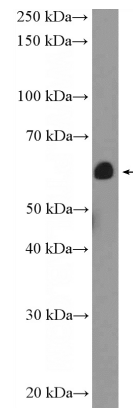
Recommended Dilution:

WB: 1:200-1:2000

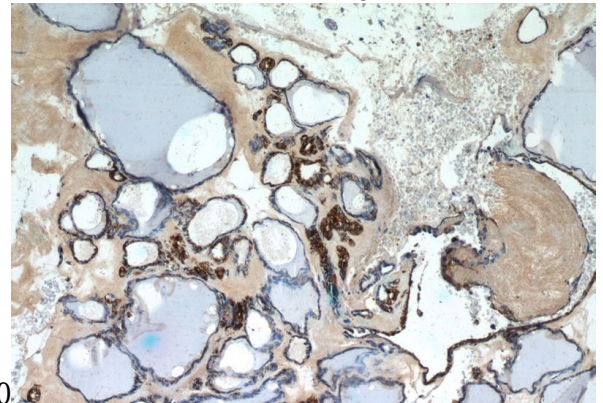
IHC: 1:50-1:500

IF: 1:20-1:200

Validations



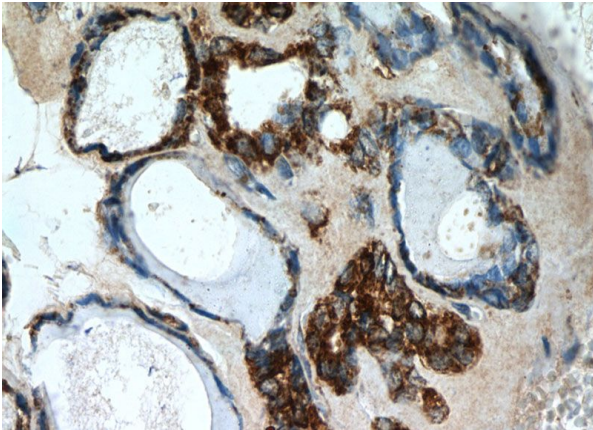
NIH/3T3 cells were subjected to SDS PAGE followed by western blot with Catalog No:108908(calreticulin Antibody) at dilution of



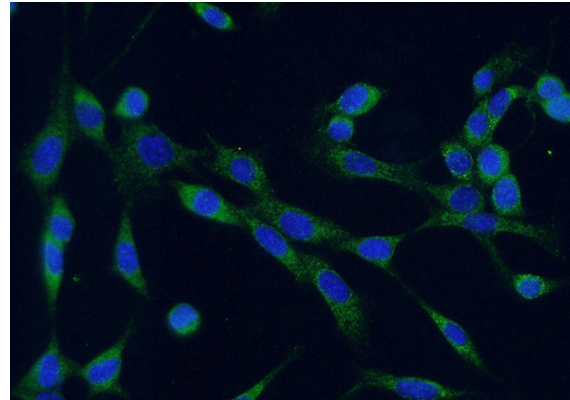
Immunohistochemistry of paraffin-embedded human thyroid tissue slide using Catalog No:108908(calreticulin Antibody) at dilution of 1:50 (under 10x lens)

calreticulin antibody

Catalog Number: 108908



Immunohistochemistry of paraffin-embedded human thyroid tissue slide using Catalog No:108908(calreticulin Antibody) at dilution of 1:50 (under 40x lens)



Immunofluorescent analysis of (-20oc Ethanol) fixed NIH/3T3 cells using Catalog No:108908(calreticulin Antibody) at dilution of 1:50 and Alexa Fluor 488-conjugated AffiniPure Goat Anti-Rabbit IgG(H+L)