

# Cathepsin D antibody



Catalog Number: 108888

## Product name

Cathepsin D antibody

## Specificity

Human, Mouse, Rat; other species not tested.

## Antibody description

Cathepsin D Rabbit Polyclonal antibody. Positive WB detected in MCF7 cells, A431 cells, HepG2 cells, HT-1080 cells, L02 cells. Positive IF detected in HepG2 cells. Positive IHC detected in human breast cancer tissue, human hepat°Cirrhosis tissue, human liver cancer tissue. Observed molecular weight by Western-blot: 48-52 kDa

## Preparation

This antibody was obtained by immunization of Cathepsin D recombinant protein (Accession Number: NM\_001909). Purification method: Antigen affinity purified.

## Formulation

PBS with 0.02% sodium azide and 50% glycerol pH 7.3.

## Storage

Store at -20°C. DO NOT ALIQUOT

## Clonality

Polyclonal

## Ig Type

Rabbit IgG

## Applications

ELISA, WB, IF, IHC

## Dilutions

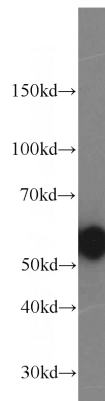
Recommended Dilution:

WB: 1:500-1:5000

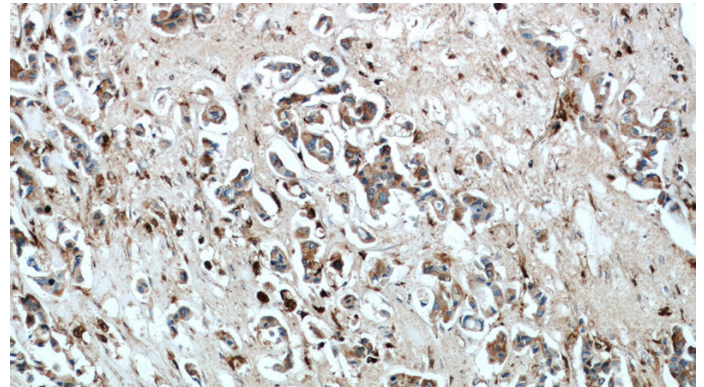
IHC: 1:20-1:200

IF: 1:10-1:100

## Validations



MCF7 cells were subjected to SDS PAGE followed by western blot with Catalog No:108888(CTSD antibody) at dilution of 1:1000

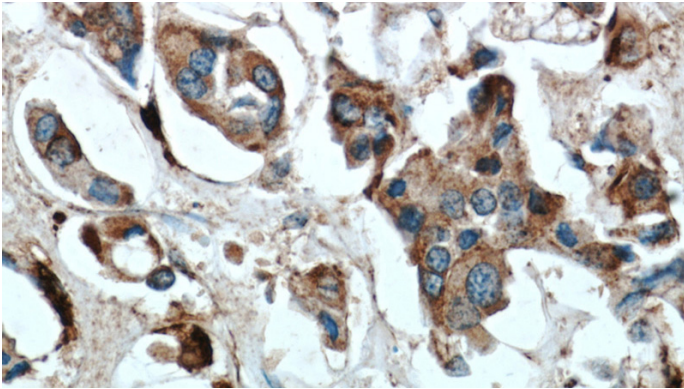


Immunohistochemical of paraffin-embedded human breast cancer using Catalog No:108888(CTSD antibody) at dilution of 1:50 (under 10x lens)

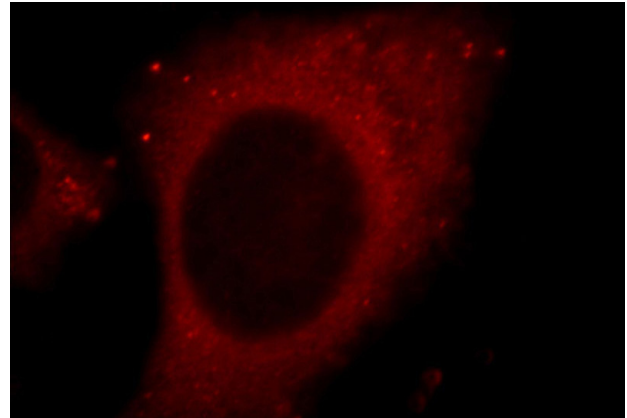
# Cathepsin D antibody

Catalog Number: 108888

---



Immunohistochemical of paraffin-embedded human breast cancer using Catalog No:108888(CTSD antibody) at dilution of 1:50 (under 40x lens)



Immunofluorescent analysis of HepG2 cells, using CTSD antibody Catalog No:108888 at 1:25 dilution and Rhodamine-labeled goat anti-rabbit IgG (red).