

C19orf36 antibody



Catalog Number: 108621

Product name

C19orf36 antibody

IHC: 1:20-1:200

IF: 1:20-1:200

Specificity

Human, Mouse; other species not tested.

Antibody description

C19orf36 Rabbit Polyclonal antibody. Positive WB detected in mouse testis tissue, HepG2 cells. Positive IF detected in HepG2 cells. Positive IHC detected in mouse testis tissue, human testis tissue. Observed molecular weight by Western-blot: 27-30 kDa

Preparation

This antibody was obtained by immunization of C19orf36 recombinant protein (Accession Number: NM_001031735). Purification method: Antigen affinity purified.

Formulation

PBS with 0.1% sodium azide and 50% glycerol pH 7.3.

Storage

Store at -20°C. DO NOT ALIQUOT

Clonality

Polyclonal

Ig Type

Rabbit IgG

Applications

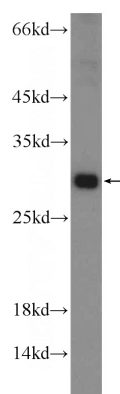
ELISA, IHC, IF, WB

Dilutions

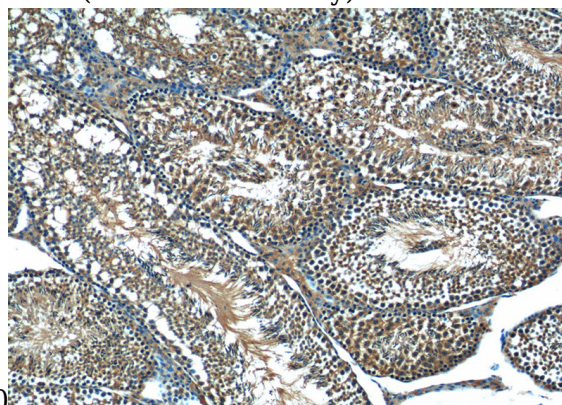
Recommended Dilution:

WB: 1:200-1:2000

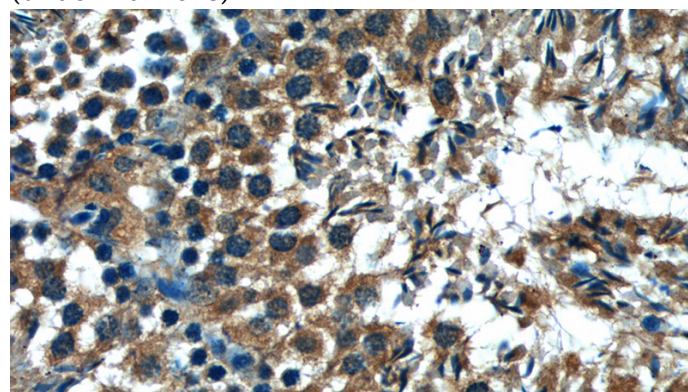
Validations



mouse testis tissue were subjected to SDS PAGE followed by western blot with Catalog No:108621(C19orf36 Antibody) at dilution of



Immunohistochemistry of paraffin-embedded mouse testis tissue slide using Catalog No:108621(C19orf36 Antibody) at dilution of 1:50 (under 10x lens)



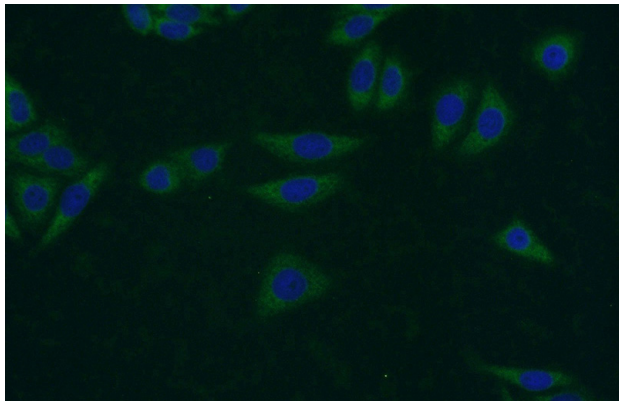
Immunohistochemistry of paraffin-embedded

C19orf36 antibody



Catalog Number: 108621

mouse testis tissue slide using Catalog No:108621(C19orf36 Antibody) at dilution of 1:50 (under 40x lens)



Immunofluorescent analysis of HepG2 cells using Catalog No:108621(C19orf36 Antibody) at dilution of 1:50 and Alexa Fluor 488-conjugated AffiniPure Goat Anti-Rabbit IgG(H+L)