

BIN2 antibody



Catalog Number: 108502

Product name

BIN2 antibody

IP: 1:200-1:1000

IHC: 1:20-1:200

Specificity

Human; other species not tested.

Antibody description

BIN2 Rabbit Polyclonal antibody. Positive IHC detected in human spleen tissue, human heart tissue, human lung tissue, human ovary tissue, human skin tissue. Positive WB detected in Jurkat cells. Positive IP detected in Jurkat cells. Observed molecular weight by Western-blot: 80-90 kDa

Preparation

This antibody was obtained by immunization of BIN2 recombinant protein (Accession Number: NM_016293). Purification method: Antigen affinity purified.

Formulation

PBS with 0.02% sodium azide and 50% glycerol pH 7.3.

Storage

Store at -20°C. DO NOT ALIQUOT

Clonality

Polyclonal

Ig Type

Rabbit IgG

Applications

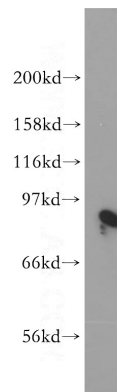
ELISA, WB, IHC, IP

Dilutions

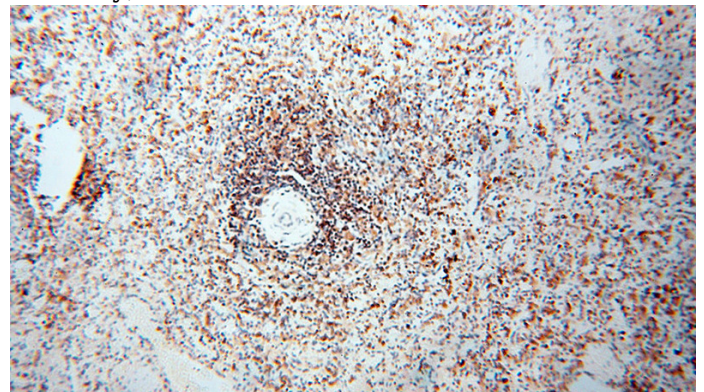
Recommended Dilution:

WB: 1:200-1:2000

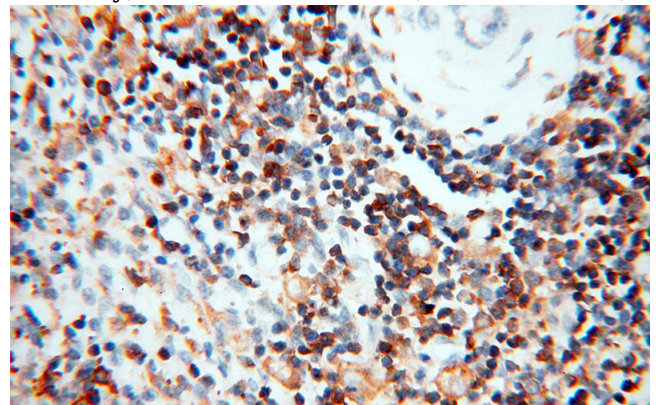
Validations



Jurkat cells were subjected to SDS PAGE followed by western blot with Catalog No:117147(BIN2 antibody) at dilution of 1:400



Immunohistochemical of paraffin-embedded human spleen using Catalog No:117147(BIN2 antibody) at dilution of 1:100 (under 10x lens)

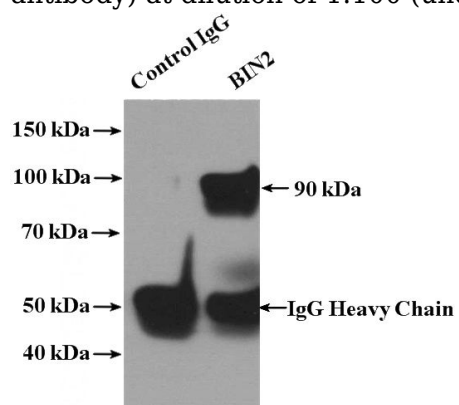


Immunohistochemical of paraffin-embedded human spleen using Catalog No:117147(BIN2 antibody) at dilution of 1:100 (under 10x lens)

BIN2 antibody

Catalog Number: 108502

antibody) at dilution of 1:100 (under 40x lens)



IP Result of anti-BIN2 (IP:Catalog No:117147, 4ug; Detection:Catalog No:117147 1:400) with Jurkat cells lysate 2000ug.