

# BCL2L2 antibody

Catalog Number: 108427

## Product name

BCL2L2 antibody

## Specificity

Human, Mouse, Rat; other species not tested.

## Antibody description

BCL2L2 Rabbit Polyclonal antibody. Positive WB detected in HL-60 cells. Positive IHC detected in human liver cancer tissue. Observed molecular weight by Western-blot: 21 kDa

## Preparation

This antibody was obtained by immunization of BCL2L2 recombinant protein (Accession Number: NM\_004050). Purification method: Antigen affinity purified.

## Formulation

PBS with 0.1% sodium azide and 50% glycerol pH 7.3.

## Storage

Store at -20°C. DO NOT ALIQUOT

## Clonality

Polyclonal

## Ig Type

Rabbit IgG

## Applications

ELISA, WB, IHC

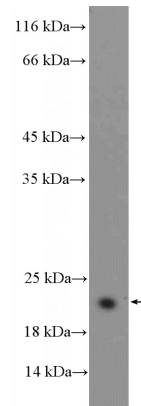
## Dilutions

Recommended Dilution:

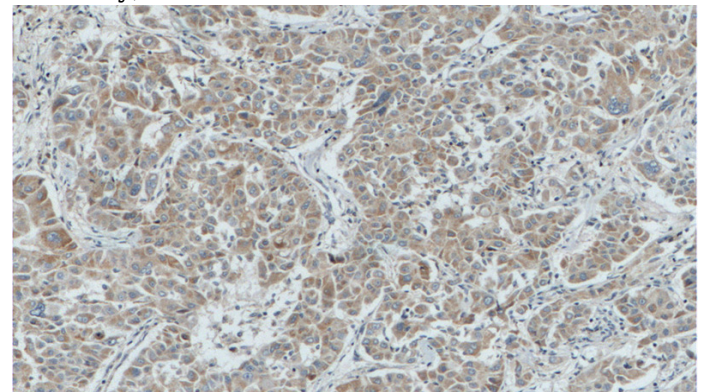
WB: 1:200-1:2000

IHC: 1:50-1:500

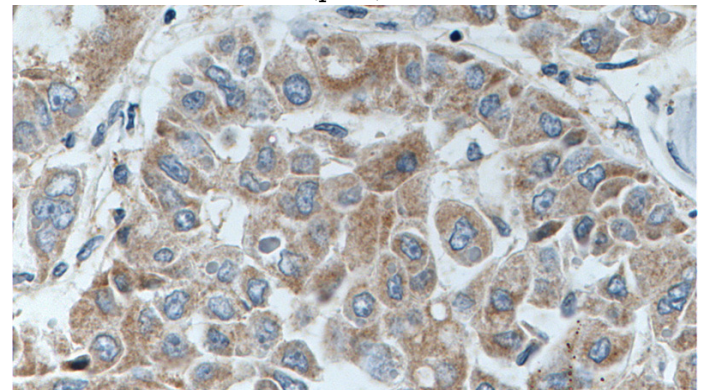
## Validations



HL-60 cells were subjected to SDS PAGE followed by western blot with Catalog No:117100(BCL2L2 Antibody) at dilution of 1:600



Immunohistochemistry of paraffin-embedded human liver cancer tissue slide using Catalog No:117100(BCL2L2 Antibody) at dilution of 1:200 (under 10x lens). Heat mediated antigen retrieval with Tris-EDTA buffer (pH9).



Immunohistochemistry of paraffin-embedded human liver cancer tissue slide using Catalog No:117100(BCL2L2 Antibody) at dilution of 1:200 (under 40x lens). Heat mediated antigen retrieval.

# BCL2L2 antibody



Catalog Number: 108427

---

with Tris-EDTA buffer(pH9).