

ATP2A1 antibody



Catalog Number: 108347

Product name

ATP2A1 antibody

Immunogen

[Human ATP2A1 Recombinant protein \(GST tag\)](#)

Specificity

Human, Mouse; other species not tested.

Antibody description

ATP2A1 Rabbit Polyclonal antibody. Positive IHC detected in human skeletal muscle tissue, human heart tissue. Positive IP detected in mouse skeletal muscle tissue. Observed molecular weight by Western-blot: 116 kDa

Preparation

This antibody was obtained by immunization of ATP2A1 recombinant protein (Accession Number: BC037354). Purification method: Antigen Affinity purified.

Formulation

PBS with 0.02% sodium azide and 50% glycerol pH 7.3.

Storage

Store at -20°C. DO NOT ALIQUOT

Clonality

Polyclonal

Ig Type

Rabbit IgG

Applications

ELISA, IP, IHC

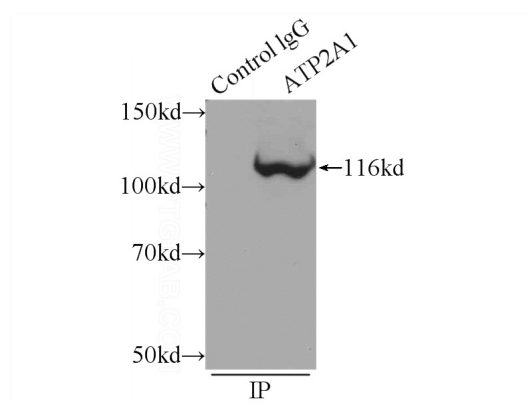
Dilutions

Recommended Dilution:

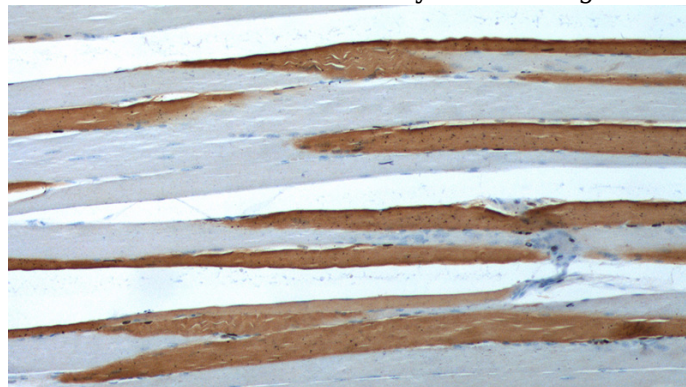
IP: 1:200-1:2000

IHC: 1:50-1:500

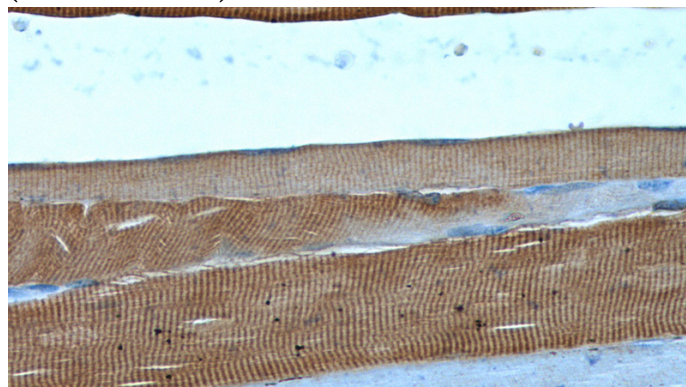
Validations



IP Result of anti-ATP2A1 (IP:Catalog No:108347, 5ug; Detection:Catalog No:108347 1:700) with mouse skeletal muscle tissue lysate 2160ug.



Immunohistochemistry of paraffin-embedded human skeletal muscle tissue slide using Catalog No:108347(ATP2A1 Antibody) at dilution of 1:200 (under 10x lens).



ATP2A1 antibody



Catalog Number: 108347

Immunohistochemistry of paraffin-embedded
human skeletal muscle tissue slide using Catalog

No:108347(ATP2A1 Antibody) at dilution of 1:200
(under 40x lens).