

# ATP1A2 antibody



Catalog Number: 108342

## Product name

ATP1A2 antibody

Recommended Dilution:

WB: 1:500-1:5000

## Specificity

Human, Mouse, Rat; other species not tested.

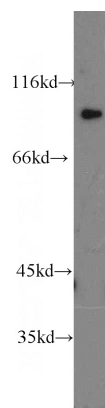
IHC: 1:20-1:200

IF: 1:10-1:100

## Antibody description

ATP1A2 Rabbit Polyclonal antibody. Positive IHC detected in human skin tissue, human brain tissue, human heart tissue, human kidney tissue, human liver tissue, human testis tissue. Positive IF detected in HeLa cells. Positive FC detected in HeLa cells. Positive WB detected in HEK-293 cells. Observed molecular weight by Western-blot: 97-100 kDa

## Validations



## Preparation

This antibody was obtained by immunization of ATP1A2 recombinant protein (Accession Number: NM\_000702). Purification method: Antigen affinity purified.

HEK-293 cells were subjected to SDS PAGE followed by western blot with Catalog No:108342(ATP1A2 antibody) at dilution of 1:1200

## Formulation

PBS with 0.02% sodium azide and 50% glycerol pH 7.3.

## Storage

Store at -20°C. DO NOT ALIQUOT

## Clonality

Polyclonal

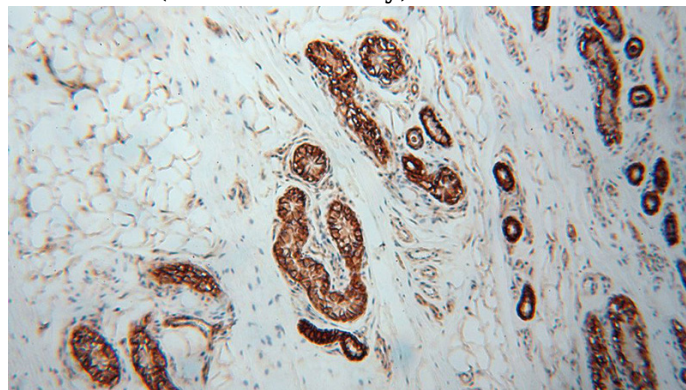
## Ig Type

Rabbit IgG

## Applications

ELISA, WB, IHC, IF, FC

## Dilutions

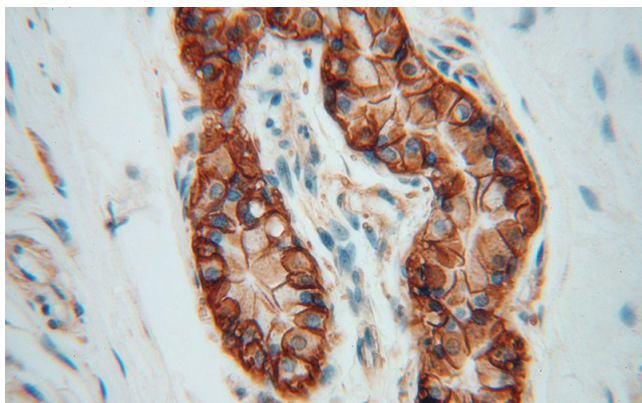


Immunohistochemical of paraffin-embedded human skin using Catalog No:108342(ATP1A2 antibody) at dilution of 1:100 (under 10x lens)

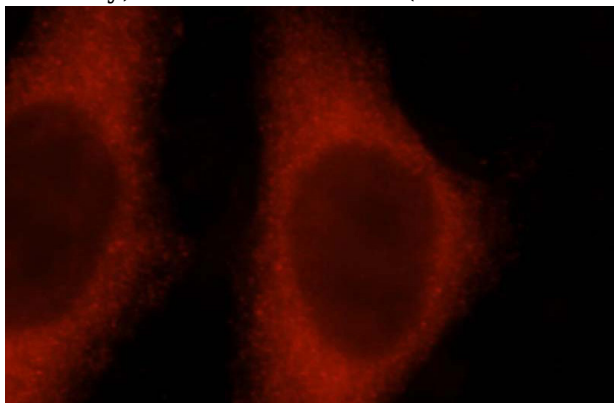
# ATP1A2 antibody



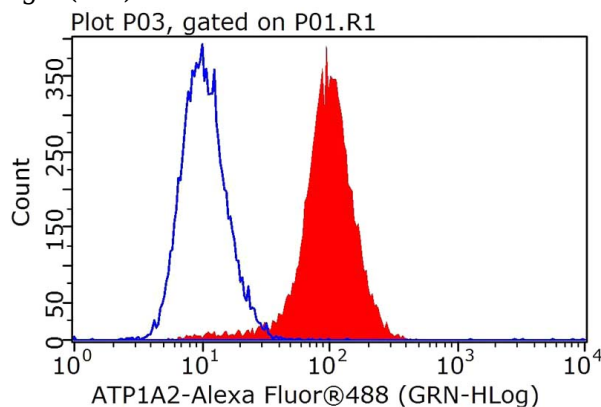
Catalog Number: 108342



Immunohistochemical of paraffin-embedded human skin using Catalog No:108342(ATP1A2 antibody) at dilution of 1:100 (under 40x lens)



Immunofluorescent analysis of HeLa cells, using ATP1A2 antibody Catalog No:108342 at 1:25 dilution and Rhodamine-labeled goat anti-rabbit IgG (red).



$1 \times 10^6$  HeLa cells were stained with 0.5ug ATP1A2 antibody (Catalog No:108342, red) and control antibody (blue). Fixed with 4% PFA blocked with 3% BSA (30 min). FITC-Goat anti-Rabbit IgG with dilution 1:100.