

# ARD1A antibody



Catalog Number: 108240

## Product name

ARD1A antibody

WB: 1:500-1:5000

IP: 1:200-1:2000

## Specificity

Human, Mouse, Rat; other species not tested.

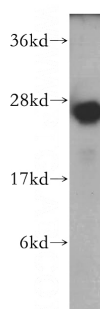
IHC: 1:20-1:200

IF: 1:20-1:200

## Antibody description

ARD1A Rabbit Polyclonal antibody. Positive IHC detected in human breast cancer tissue. Positive IF detected in MCF-7 cells. Positive IP detected in MCF-7 cells. Positive WB detected in MCF7 cells, HeLa cells, HL-60 cells, human colon tissue. Observed molecular weight by Western-blot: 26 kDa

## Validations



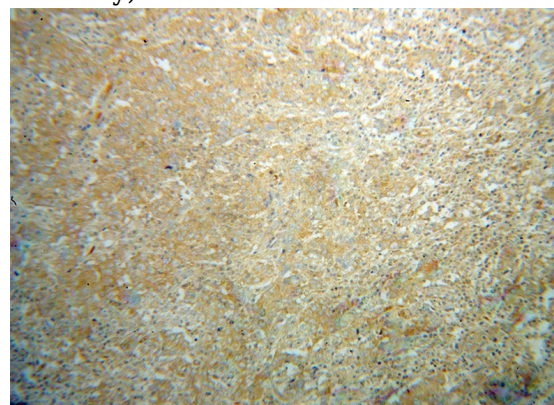
## Preparation

This antibody was obtained by immunization of ARD1A recombinant protein (Accession Number: NM\_003491). Purification method: Antigen affinity purified.

MCF7 cells were subjected to SDS PAGE followed by western blot with Catalog No:108240(ARD1A antibody) at dilution of 1:500

## Formulation

PBS with 0.02% sodium azide and 50% glycerol pH 7.3.



## Storage

Store at -20°C. DO NOT ALIQUOT

## Clonality

Polyclonal

## Ig Type

Rabbit IgG

Immunohistochemical of paraffin-embedded human breast cancer using Catalog No:108240(ARD1A antibody) at dilution of 1:100 (under 10x lens)

## Applications

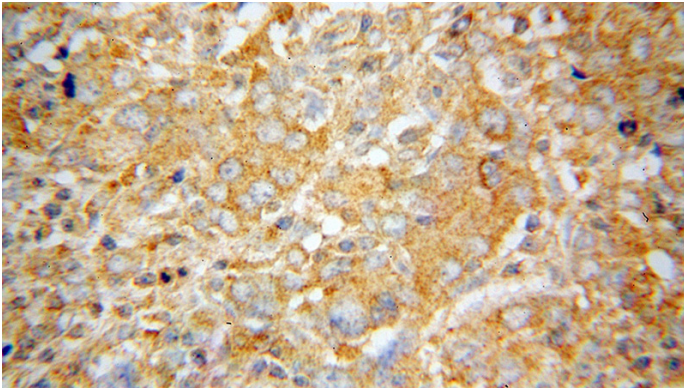
ELISA, WB, IHC, IF, IP

## Dilutions

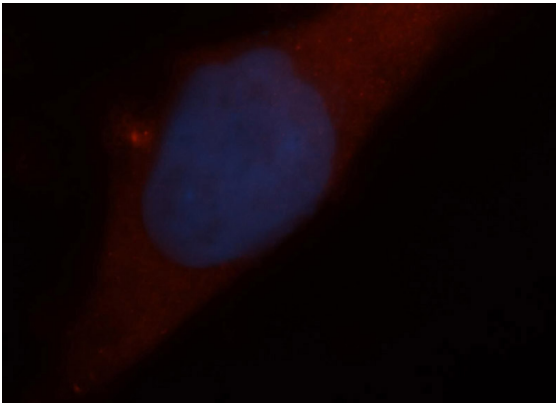
Recommended Dilution:

# ARD1A antibody

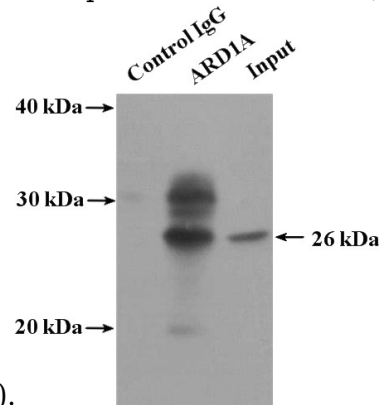
Catalog Number: 108240



Immunohistochemical of paraffin-embedded human breast cancer using Catalog No:108240(ARD1A antibody) at dilution of 1:100 (under 40x lens)



Immunofluorescent analysis of MCF-7 cells, using ARD1A antibody Catalog No:108240 at 1:50 dilution and Rhodamine-labeled goat anti-rabbit IgG (red). Blue pseudocolor = DAPI (fluorescent



DNA dye).

IP Result of anti-ARD1A (IP:Catalog No:108240, 4ug; Detection:Catalog No:108240 1:500) with MCF-7 cells lysate 3200ug.