

ARHGEF5 antibody



Catalog Number: 108188

General Information

Product name:

ARHGEF5 antibody

Immunogen:

Applications:

ELISA, WB, IHC, IP

Specificity:

Human, Mouse, Rat; other species not tested.

Antibody description:

ARHGEF5 Rabbit Polyclonal antibody. Positive IHC detected in human pancreas cancer tissue. Positive IP detected in mouse kidney tissue. Positive WB detected in MCF7 cells, HeLa cells, human kidney tissue, human liver tissue, mouse kidney tissue, rat kidney tissue. Observed molecular weight by Western-blot: 60 kDa

Properties

Preparation:

This antibody was obtained by immunization of ARHGEF5 recombinant protein (Accession Number: BC010046). Purification method: Antigen affinity purified.

Formulation:

PBS with 0.1% sodium azide and 50% glycerol pH 7.3.

Storage:

Store at -20°C. DO NOT ALIQUOT

Clonality:

Polyclonal

Ig Type:Rabbit IgG

Applications

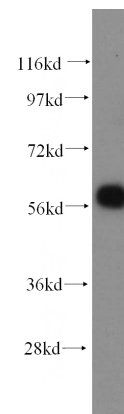
Recommended Dilution:

WB: 1:1000-1:10000

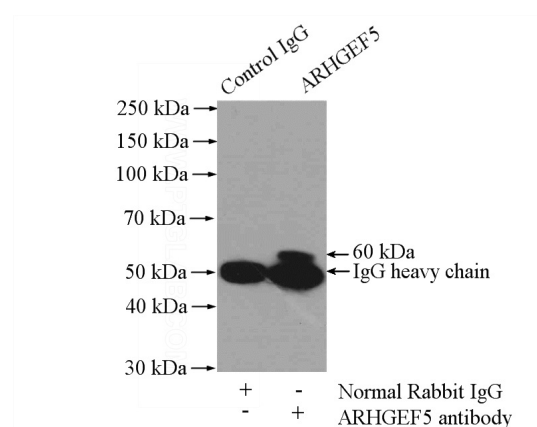
IP: 1:200-1:2000

IHC: 1:20-1:200

Validations



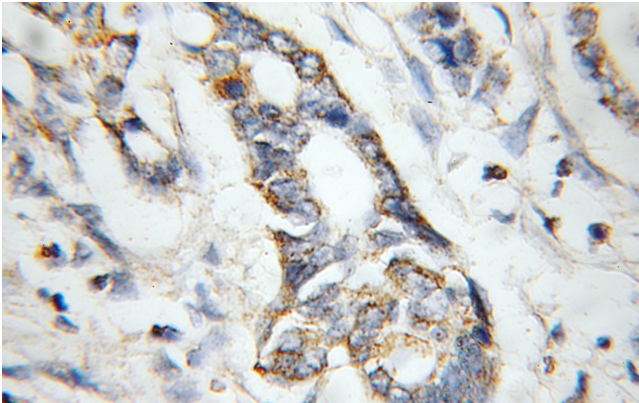
MCF7 cells were subjected to SDS PAGE followed by western blot with Catalog No:108188(ARHGEF5 antibody) at dilution of 1:500



IP Result of anti-ARHGEF5 (IP:Catalog No:108188, 4ug; Detection:Catalog No:108188 1:500) with mouse kidney tissue lysate 4000ug.

ARHGEF5 antibody

Catalog Number: 108188



Immunohistochemical of paraffin-embedded human pancreas cancer using Catalog No:108188(ARHGEF5 antibody) at dilution of 1:50 (under 10x lens)