

ARPC2 antibody



Catalog Number: 108165

Product name

ARPC2 antibody

Immunogen

[Human ARPC2 Recombinant protein \(GST tag\)](#)

Specificity

Human, Mouse, Rat; other species not tested.

Antibody description

ARPC2 Rabbit Polyclonal antibody. Positive IHC detected in human breast cancer tissue. Positive IF detected in Hela cells. Positive WB detected in MCF7 cells, 3T3-L1 cells, HeLa cells, mouse skeletal muscle tissue, NIH/3T3 cells, PC-3 cells. Observed molecular weight by Western-blot: 34 kDa

Preparation

This antibody was obtained by immunization of ARPC2 recombinant protein (Accession Number: NM_005731). Purification method: Antigen affinity purified.

Formulation

PBS with 0.02% sodium azide and 50% glycerol pH 7.3.

Storage

Store at -20°C. DO NOT ALIQUOT

Clonality

Polyclonal

Ig Type

Rabbit IgG

Applications

ELISA, WB, IHC, IF

Dilutions

Recommended Dilution:

WB: 1:500-1:5000

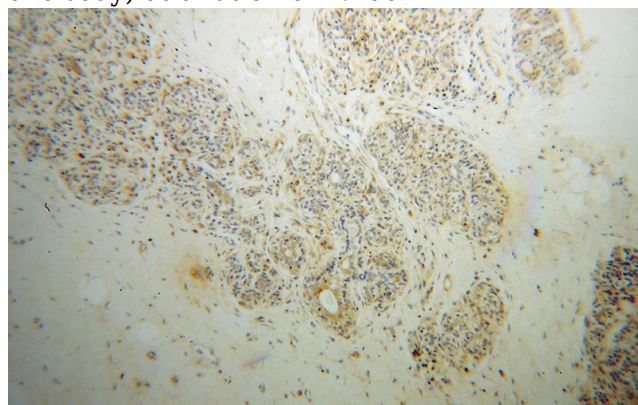
IHC: 1:20-1:200

IF: 1:10-1:100

Validations



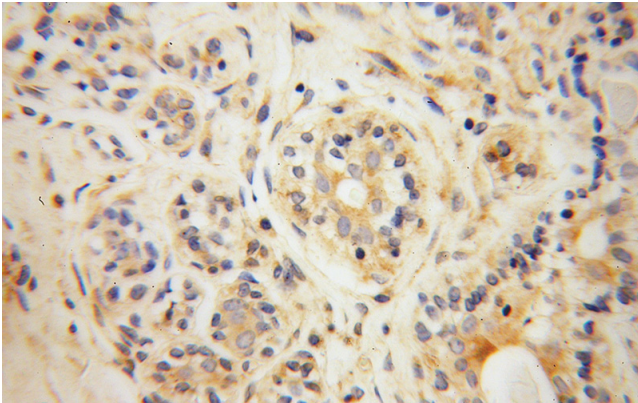
MCF7 cells were subjected to SDS PAGE followed by western blot with Catalog No:108165(ARPC2 antibody) at dilution of 1:400



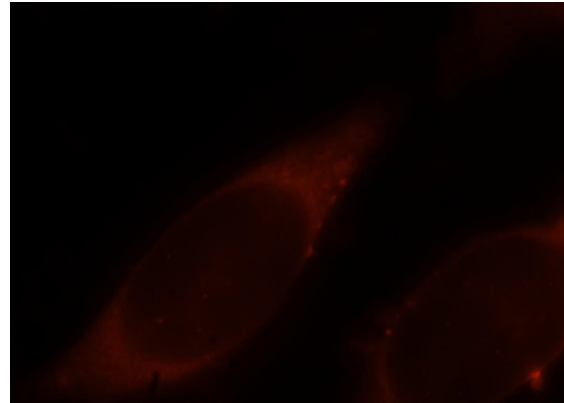
Immunohistochemical of paraffin-embedded human breast cancer using Catalog No:108165(ARPC2 antibody) at dilution of 1:100 (under 10x lens)

ARPC2 antibody

Catalog Number: 108165



Immunohistochemical of paraffin-embedded human breast cancer using Catalog No:108165(ARPC2 antibody) at dilution of 1:100 (under 40x lens)



Immunofluorescent analysis of HeLa cells, using ARPC2 antibody Catalog No:108165 at 1:25 dilution and Rhodamine-labeled goat anti-rabbit IgG (red).