

# Apolipoprotein AI antibody



Catalog Number: 108037

## Product name

Apolipoprotein AI antibody

Recommended Dilution:

WB: 1:500-1:5000

## Specificity

Human, Mouse; other species not tested.

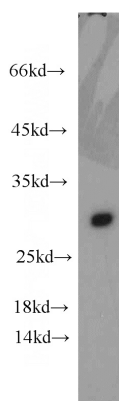
IP: 1:200-1:2000

IHC: 1:20-1:200

## Antibody description

Apolipoprotein AI Rabbit Polyclonal antibody. Positive IHC detected in human liver cancer tissue, human lung tissue. Positive FC detected in HepG2 cells. Positive WB detected in human blood tissue, human brain tissue, human ileum tissue, mouse lung tissue, PC-13 cells. Positive IP detected in mouse lung tissue. Observed molecular weight by Western-blot: 26-30kd

## Validations



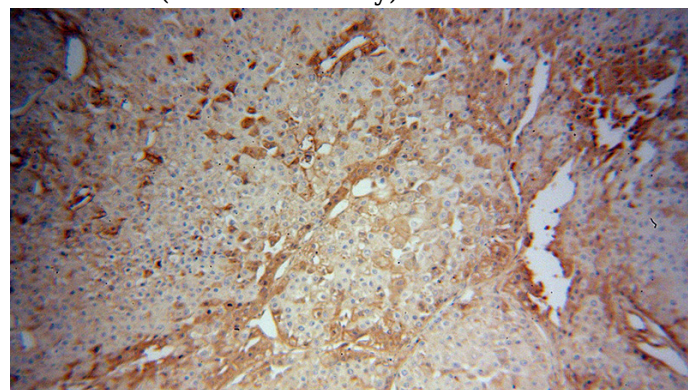
## Preparation

This antibody was obtained by immunization of Apolipoprotein AI recombinant protein (Accession Number: NM\_000039). Purification method: Antigen affinity purified.

human blood tissue were subjected to SDS PAGE followed by western blot with Catalog No:108037(APOA1 antibody) at dilution of 1:1000

## Formulation

PBS with 0.02% sodium azide and 50% glycerol pH 7.3.



## Storage

Store at -20°C. DO NOT ALIQUOT

## Clonality

Polyclonal

Immunohistochemical of paraffin-embedded human liver cancer using Catalog No:108037(APOA1 antibody) at dilution of 1:100 (under 10x lens)

## Ig Type

Rabbit IgG

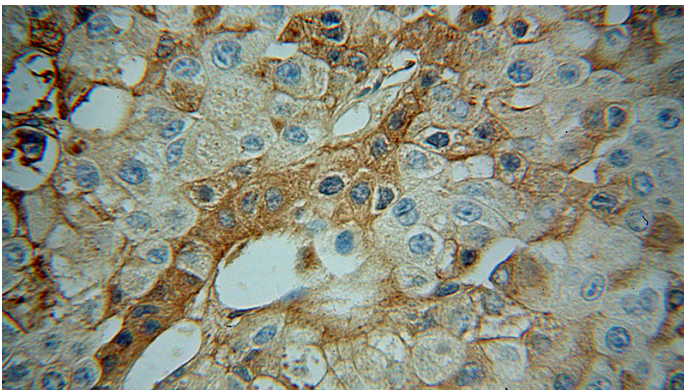
## Applications

ELISA, WB, IHC, FC, IP

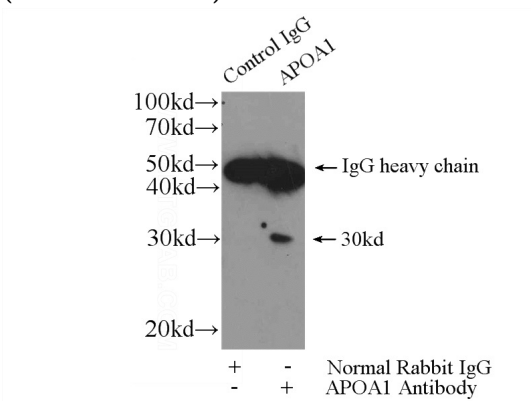
## Dilutions

# Apolipoprotein AI antibody

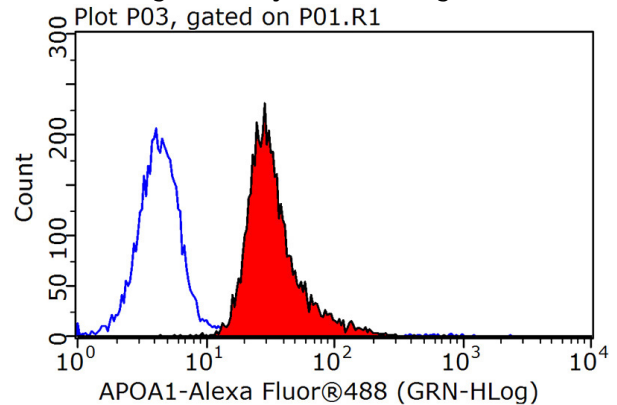
Catalog Number: 108037



Immunohistochemical of paraffin-embedded human liver cancer using Catalog No:108037(APOA1 antibody) at dilution of 1:100 (under 40x lens)



IP Result of anti-APOA1 (IP:Catalog No:108037, 4ug; Detection:Catalog No:108037 1:500) with mouse lung tissue lysate 2800ug.



1X10<sup>6</sup> HepG2 cells were stained with 0.2ug APOA1 antibody (Catalog No:108037, red) and control antibody (blue). Fixed with 90% MeOH blocked with 3% BSA (30 min). Alexa Fluor 488-conjugated AffiniPure Goat Anti-Rabbit IgG(H+L) with dilution 1:1500.