

ALPL antibody



Catalog Number: 107881

Product name

ALPL antibody

WB: 1:500-1:5000

IHC: 1:20-1:200

Specificity

Human, Mouse, Rat; other species not tested.

Antibody description

ALPL Rabbit Polyclonal antibody. Positive FC detected in HeLa cells. Positive IHC detected in human colon cancer tissue, human liver cancer tissue, human lung cancer tissue. Positive WB detected in HEK-293 cells, HeLa cells, mouse kidney tissue. Observed molecular weight by Western-blot: 80 kDa

Preparation

This antibody was obtained by immunization of ALPL recombinant protein (Accession Number: NM_000478). Purification method: Antigen affinity purified.

Formulation

PBS with 0.1% sodium azide and 50% glycerol pH 7.3.

Storage

Store at -20°C. DO NOT ALIQUOT

Clonality

Polyclonal

Ig Type

Rabbit IgG

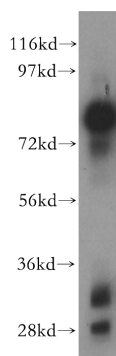
Applications

ELISA, WB, IHC, FC

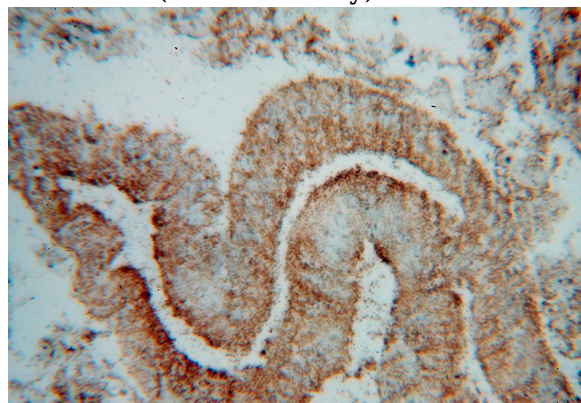
Dilutions

Recommended Dilution:

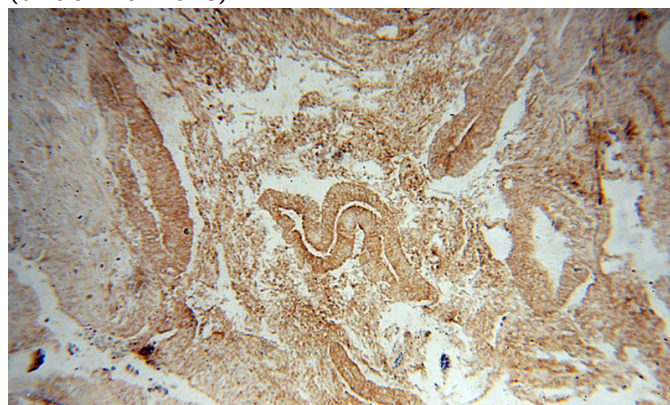
Validations



HEK-293 cells were subjected to SDS PAGE followed by western blot with Catalog No:107881(ALPL antibody) at dilution of 1:1000



Immunohistochemical of paraffin-embedded human colon cancer using Catalog No:107881(ALPL antibody) at dilution of 1:100 (under 40x lens)



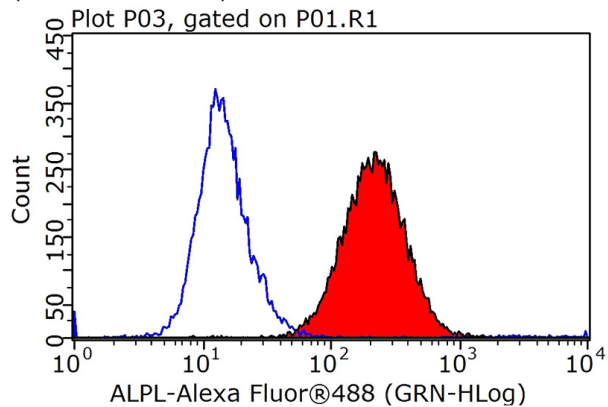
Immunohistochemical of paraffin-embedded

ALPL antibody



Catalog Number: 107881

human colon cancer using Catalog
No:107881(ALPL antibody) at dilution of 1:100
(under 10x lens)



1X10⁶ HeLa cells were stained with 0.2ug ALPL antibody (Catalog No:107881, red) and control antibody (blue). Fixed with 90% MeOH blocked with 3% BSA (30 min). Alexa Fluor 488-conjugated AffiniPure Goat Anti-Rabbit IgG(H+L) with dilution 1:1000.