

Alpha-1-Antitrypsin antibody



Catalog Number: 107875

Product name

Alpha-1-Antitrypsin antibody

Recommended Dilution:

WB: 1:500-1:5000

Specificity

Human, Mouse, Rat; other species not tested.

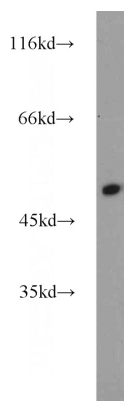
IP: 1:500-1:5000

IHC: 1:20-1:200

Antibody description

Alpha-1-Antitrypsin Rabbit Polyclonal antibody. Positive IHC detected in human liver tissue. Positive FC detected in HepG2 cells. Positive WB detected in mouse kidney tissue, human kidney tissue, mouse liver tissue, mouse lung tissue, mouse skin tissue. Positive IP detected in mouse kidney tissue. Observed molecular weight by Western-blot: 40 kDa, 45-53 kDa

Validations



Preparation

This antibody was obtained by immunization of Alpha-1-Antitrypsin recombinant protein (Accession Number: NM_001127700). Purification method: Antigen affinity purified.

mouse kidney tissue were subjected to SDS PAGE followed by western blot with Catalog No:107875(Alpha-1-Antitrypsin antibody) at dilution of 1:1000

Formulation

PBS with 0.02% sodium azide and 50% glycerol pH 7.3.

Storage

Store at -20°C. DO NOT ALIQUOT

Clonality

Polyclonal

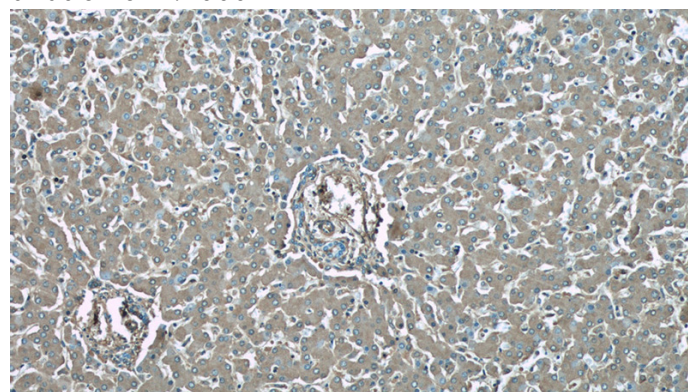
Ig Type

Rabbit IgG

Applications

ELISA, IHC, WB, IP, FC

Dilutions

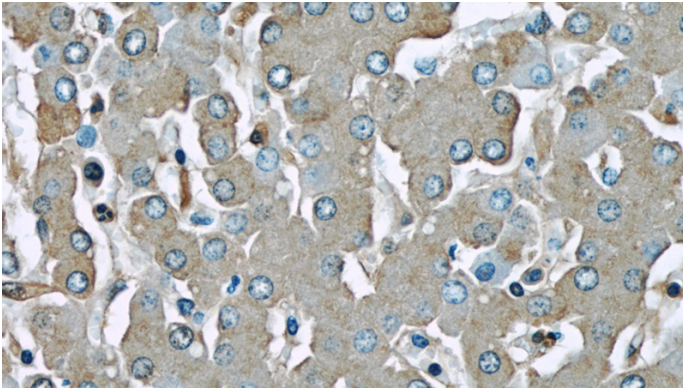


Immunohistochemical of paraffin-embedded human liver using Catalog No:107875(Alpha-1-Antitrypsin antibody) at dilution of 1:50 (under 10x lens)

Alpha-1-Antitrypsin antibody

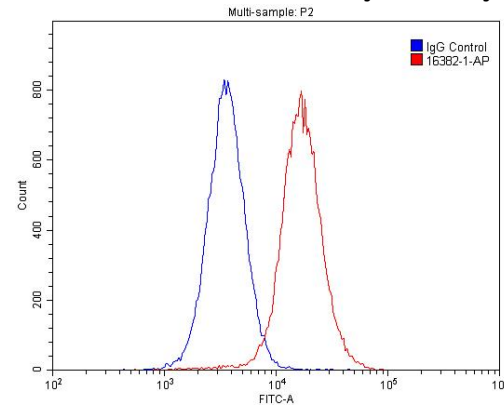


Catalog Number: 107875

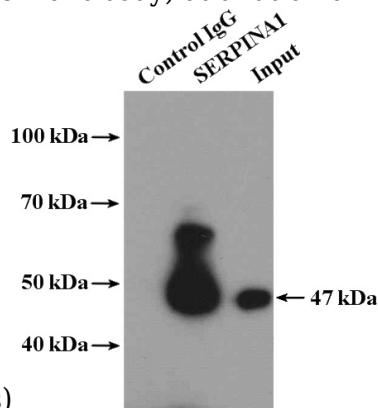


Immunohistochemical of paraffin-embedded human liver using Catalog No:107875(Alpha-1-Antitrypsin antibody) at dilution of 1:50 (under

IP Result of anti-Alpha-1-Antitrypsin (IP:Catalog No:107875, 4ug; Detection:Catalog No:107875 1:1000) with mouse kidney tissue lysate 7200ug.



1X10⁶ HepG2 cells were stained with 0.2ug Alpha-1-Antitrypsin antibody (Catalog No:107875, red) and control antibody (blue). Fixed with 4% PFA blocked with 3% BSA (30 min). Alexa Fluor 488-conjugated AffiniPure Goat Anti-Rabbit IgG(H+L) with dilution 1:1500.



40x lens)