

alpha Tubulin antibody



Catalog Number: 107873

General Information

Product name:

alpha Tubulin antibody

Immunogen:

Applications:

ELISA, IHC, IF, WB

Specificity:

Human, Mouse, Rat; other species not tested.

Antibody description:

alpha Tubulin Rabbit Polyclonal antibody. Positive IF detected in HepG2 cells. Positive IHC detected in human testis tissue, human brain tissue, human kidney tissue, human medulloblastoma tissue, human ovary tissue, human placenta tissue, human skin tissue. Positive WB detected in HeLa cells, mouse cerebellum tissue. Observed molecular weight by Western-blot: 50-55 kDa

Properties

Preparation:

This antibody was obtained by immunization of alpha Tubulin recombinant protein (Accession Number: BC050637). Purification method: Antigen affinity purified.

Formulation:

PBS with 0.02% sodium azide and 50% glycerol pH 7.3.

Storage:

Store at -20°C. DO NOT ALIQUOT

Clonality:

Polyclonal

Ig Type:Rabbit IgG

Applications

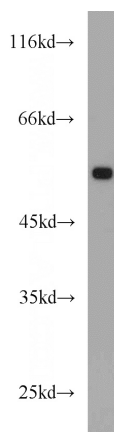
Recommended Dilution:

WB: 1:500-1:5000

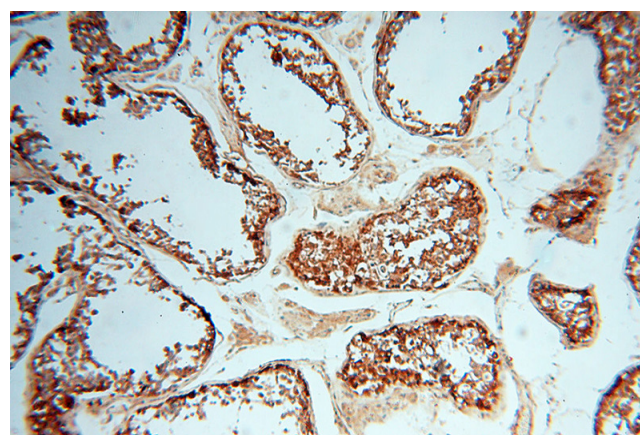
IHC: 1:20-1:200

IF: 1:10-1:100

Validations



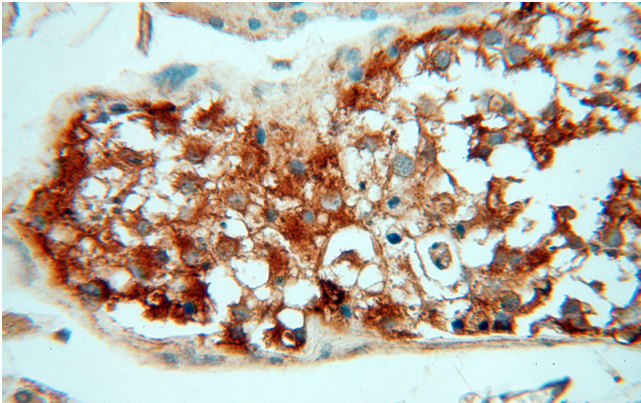
HeLa cells were subjected to SDS PAGE followed by western blot with Catalog No:117300(tubulin-Alpha antibody) at dilution of 1:1000



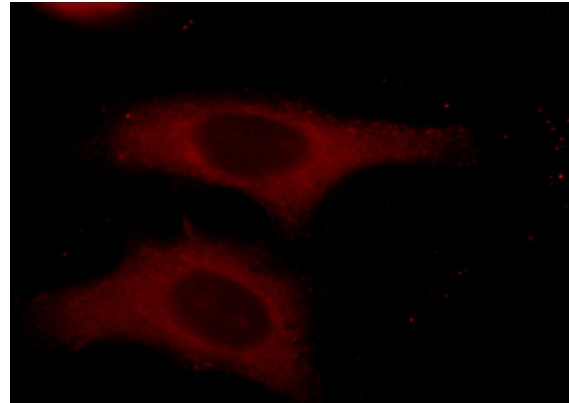
Immunohistochemical of paraffin-embedded human testis using Catalog No:117300(tubulin-Alpha antibody) at dilution of 1:50 (under 10x lens)

alpha Tubulin antibody

Catalog Number: 107873



Immunohistochemical of paraffin-embedded human testis using Catalog No:117300(tubulin-Alpha antibody) at dilution of 1:50 (under 40x lens)



Immunofluorescent analysis of HepG2 cells using Catalog No:117300(tubulin-Alpha Antibody) at dilution of 1:25 and Rhodamine-Goat anti-Rabbit IgG