

ACC1 antibody



Catalog Number: 107732

General Information

Product name:

ACC1 antibody

Immunogen:

[Human ACC Recombinant protein \(GST tag\)](#)

Applications:

ELISA, WB, IHC, IP, IF

Specificity:

Human, Mouse, Rat; other species not tested.

Antibody description:

ACC1 Rabbit Polyclonal antibody. Positive IHC detected in human skeletal muscle tissue, human kidney tissue. Positive IF detected in HeLa cells. Positive WB detected in HeLa cells, HEK-293 cells, human brain tissue, PC-3 cells, rat brain tissue. Positive IP detected in HeLa cells. Observed molecular weight by Western-blot: 260-270 kDa

Properties

Preparation:

This antibody was obtained by immunization of ACC1 recombinant protein (Accession Number: BC137287). Purification method: Antigen affinity purified.

Formulation:

PBS with 0.02% sodium azide and 50% glycerol pH 7.3.

Storage:

Store at -20°C. DO NOT ALIQUOT

Clonality:

Polyclonal

Ig Type:Rabbit IgG

Applications

Recommended Dilution:

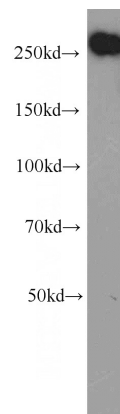
WB: 1:200-1:2000

IP: 1:200-1:2000

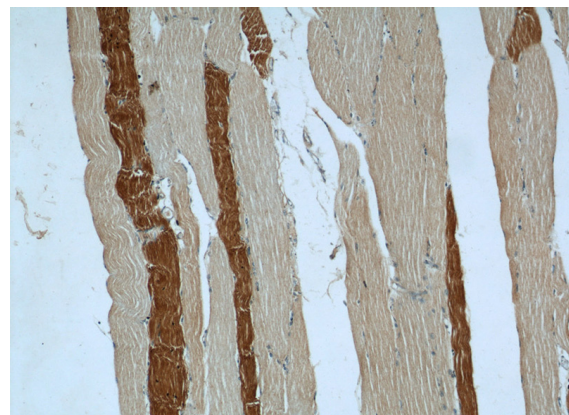
IHC: 1:20-1:200

IF: 1:20-1:200

Validations



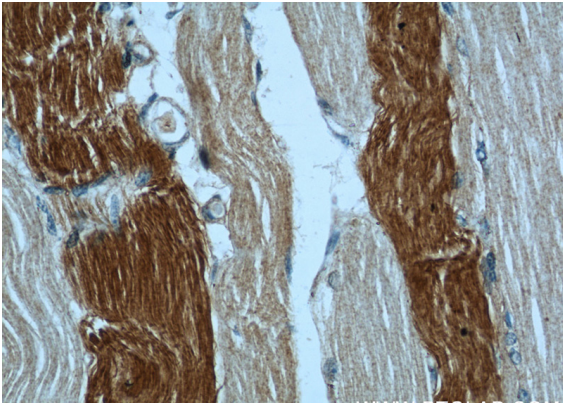
HeLa cells were subjected to SDS PAGE followed by western blot with Catalog No:107732(ACC1 antibody) at dilution of 1:500



Immunohistochemical of paraffin-embedded human skeletal muscle using Catalog No:107732(ACC1 antibody) at dilution of 1:50 (under 10x lens)

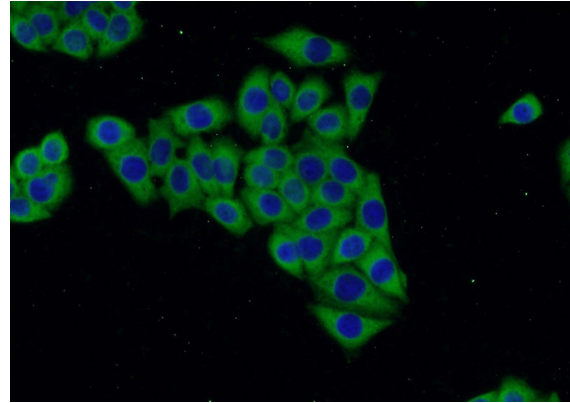
ACC1 antibody

Catalog Number: 107732



Immunohistochemical of paraffin-embedded human skeletal muscle using Catalog No:107732(ACC1 antibody) at dilution of 1:50 (under 40x lens)

IP Result of anti-ACC (IP:Catalog No:107732, 5ug; Detection:Catalog No:107732 1:500) with HeLa cells lysate 2800ug.



Immunofluorescent analysis of HeLa cells using Catalog No:107732(ACC1 Antibody) at dilution of 1:50 and Alexa Fluor 488-conjugated AffiniPure Goat Anti-Rabbit IgG(H+L)

