

Pikachurin antibody



Catalog Number: 107473

Product name

Pikachurin antibody

Specificity

Human; other species not tested.

Antibody description

Pikachurin Mouse Monoclonal antibody. Positive WB detected in human retina tissue, PC-3 cells. Observed molecular weight by Western-blot: 111 kDa, 55-60 kDa

Preparation

This antibody was obtained by immunization of Pikachurin recombinant protein (Accession Number: NM_182801). Purification method: Protein G purified.

Formulation

PBS with 0.02% sodium azide and 50% glycerol pH 7.3.

Storage

Store at -20°C. DO NOT ALIQUOT

Clonality

Monoclonal

Ig Type

Mouse IgG1

Applications

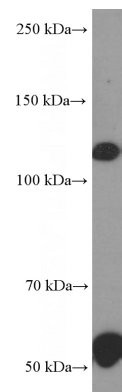
ELISA, WB

Dilutions

Recommended Dilution:

WB: 1:500-1:5000

Validations



human retina tissue were subjected to SDS PAGE followed by western blot with Catalog No:107473(EGFLAM Antibody) at dilution of 1:1000