

IFITM1-Specific antibody



Catalog Number: 107275

Product name

IFITM1-Specific antibody

IP: 1:200-1:2000

IHC: 1:20-1:200

Specificity

Human; other species not tested.

Antibody description

IFITM1-Specific Mouse Monoclonal antibody.
Positive IHC detected in human lymphoma tissue.
Positive WB detected in K562 cells, HeLa cells,
K-562 cells. Positive IP detected in HepG2 cells.
Observed molecular weight by Western-blot: 14kd;
17 kDa

Preparation

This antibody was obtained by immunization of
IFITM1-Specific recombinant protein (Accession
Number: NM_003641). Purification method:
Caprylic acid/ammonium sulfate precipitation.

Formulation

PBS with 0.1% sodium azide and 50% glycerol pH
7.3.

Storage

Store at -20°C. DO NOT ALIQUOT

Clonality

Monoclonal

Ig Type

Mouse IgG2a

Applications

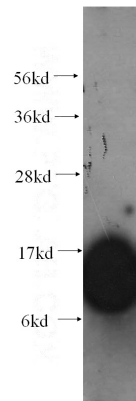
ELISA, WB, IHC, IP

Dilutions

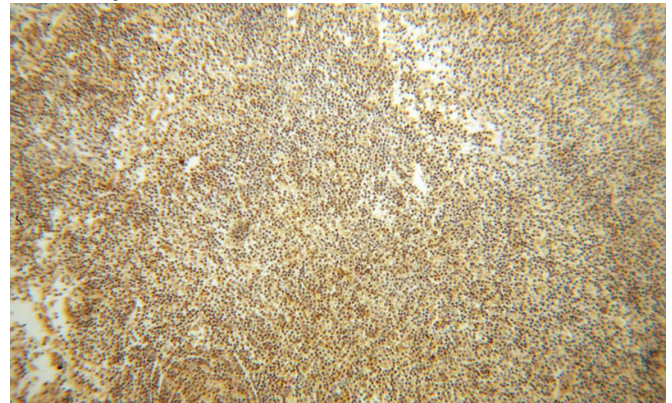
Recommended Dilution:

WB: 1:500-1:5000

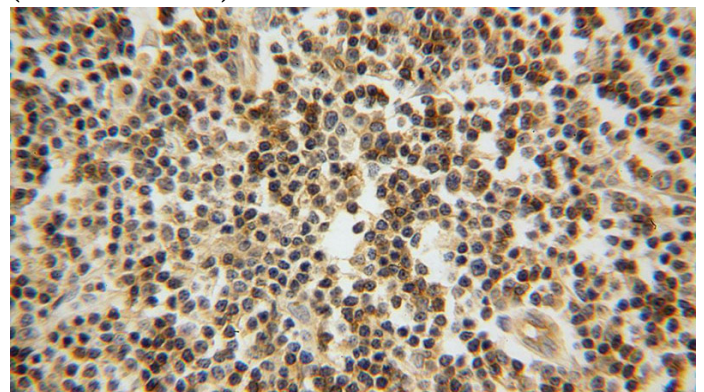
Validations



K-562 cells were subjected to SDS PAGE followed
by western blot with Catalog No:107275(IFITM1
antibody) at dilution of 1:1000



Immunohistochemical of paraffin-embedded
human lymphoma using Catalog
No:107275(IFITM1 antibody) at dilution of 1:50
(under 10x lens)



Immunohistochemical of paraffin-embedded

IFITM1-Specific antibody

Catalog Number: 107275

human lymphoma using Catalog
No:107275(IFITM1 antibody) at dilution of 1:50
(under 40x lens)

IP Result of anti-IFITM1-Specific (IP:Catalog
No:107275, 4ug; Detection:Catalog No:107275
1:500) with HepG2 cells lysate 3600ug.

