

ENTPD1 antibody



Catalog Number: 107253

Product name

ENTPD1 antibody

Specificity

Human; other species not tested.

Antibody description

ENTPD1 Mouse Monoclonal antibody. Positive WB detected in Jurkat cells. Positive IF detected in HeLa cells. Positive FC detected in Jurkat cells. Observed molecular weight by Western-blot: 54 kDa

Preparation

This antibody was obtained by immunization of ENTPD1 recombinant protein (Accession Number: NM_001164183). Purification method: Protein A purified.

Formulation

PBS with 0.02% sodium azide and 50% glycerol pH 7.3.

Storage

Store at -20°C. DO NOT ALIQUOT

Clonality

Monoclonal

Ig Type

Mouse IgG2a

Applications

ELISA, WB, IF, FC

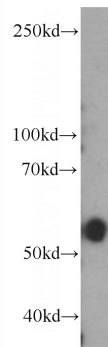
Dilutions

Recommended Dilution:

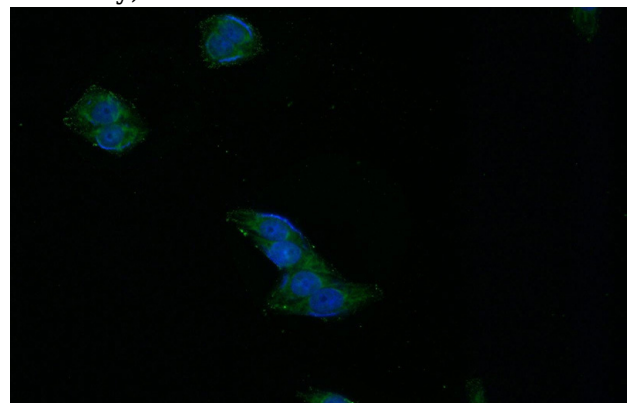
WB: 1:200-1:2000

IF: 1:20-1:200

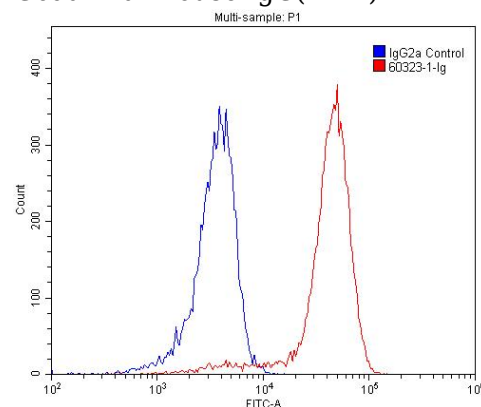
Validations



Jurkat cells were subjected to SDS PAGE followed by western blot with Catalog No:107253(ENTPD1 Antibody) at dilution of 1:500



Immunofluorescent analysis of HeLa cells using Catalog No:107253(ENTPD1 Antibody) at dilution of 1:50 and Alexa Fluor 488-conjugated AffiniPure Goat Anti-Mouse IgG(H+L)



1X10⁶ Jurkat cells were stained with 0.2ug ENTPD1 antibody (Catalog No:107253, red) and

ENTPD1 antibody



Catalog Number: 107253

control antibody (blue). Fixed with 4% PFA
blocked with 3% BSA (30 min). Alexa Fluor 488-

conjugated AffiniPure Goat Anti-Mouse IgG(H+L)
with dilution 1:1500.