

CPT1A antibody



Catalog Number: 107173

Product name

CPT1A antibody

IP: 1:200-1:2000

IHC: 1:20-1:200

Specificity

Human, Mouse, Rat; other species not tested.

Antibody description

CPT1A Mouse Monoclonal antibody. Positive IHC detected in human heart tissue, human liver tissue. Positive WB detected in lo2 cells, MCF7 cells. Positive IP detected in MCF-7 cells. Observed molecular weight by Western-blot: 86kD

Preparation

This antibody was obtained by immunization of CPT1A recombinant protein (Accession Number: NM_001031847). Purification method: Protein A purified.

Formulation

PBS with 0.02% sodium azide and 50% glycerol pH 7.3.

Storage

Store at -20°C. DO NOT ALIQUOT

Clonality

Monoclonal

Ig Type

Mouse IgG2a

Applications

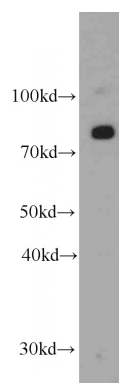
ELISA, WB, IHC, IP

Dilutions

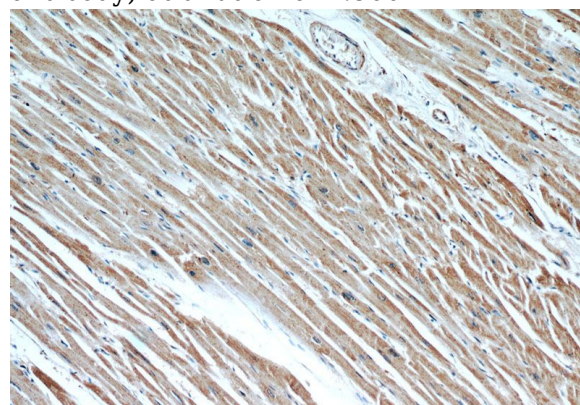
Recommended Dilution:

WB: 1:200-1:2000

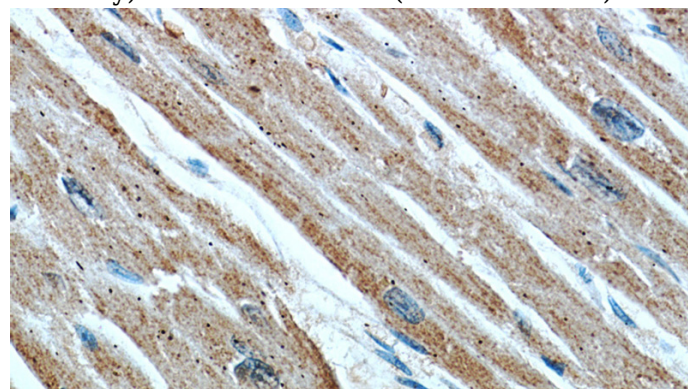
Validations



L02 cells were subjected to SDS PAGE followed by western blot with Catalog No:107173(CPT1A antibody) at dilution of 1:500



Immunohistochemical of paraffin-embedded human heart using Catalog No:107173(CPT1A antibody) at dilution of 1:50 (under 10x lens)

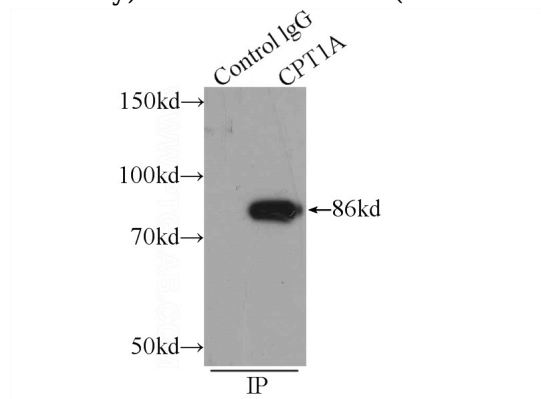


Immunohistochemical of paraffin-embedded human heart using Catalog No:107173(CPT1A antibody) at dilution of 1:50 (under 10x lens)

CPT1A antibody

Catalog Number: 107173

antibody) at dilution of 1:50 (under 40x lens)



IP Result of anti-CPT1A (IP:Catalog No:107173, 4ug; Detection:Catalog No:107173 1:500) with MCF-7 cells lysate 1200ug.