

# Cofilin antibody



Catalog Number: 107168

## Product name

Cofilin antibody

Recommended Dilution:

WB: 1:1000-1:10000

## Immunogen

[Human Cofilin Recombinant protein \(His tag\)](#)

IHC: 1:20-1:200

IF: 1:20-1:200

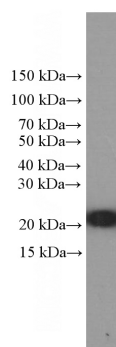
## Specificity

Human, Mouse, Rat; other species not tested.

## Validations

## Antibody description

Cofilin Mouse Monoclonal antibody. Positive IF detected in Hela cells. Positive IHC detected in human testis tissue. Positive WB detected in HeLa cells, human heart tissue, Neuro-2a cells, rat brain tissue. Observed molecular weight by Western-blot: 18 kDa



## Preparation

This antibody was obtained by immunization of Cofilin recombinant protein (Accession Number: NM\_005507). Purification method: Protein A purified.

HeLa cells were subjected to SDS PAGE followed by western blot with Catalog No:107168(Cofilin Antibody) at dilution of 1:2000

## Formulation

PBS with 0.02% sodium azide and 50% glycerol pH 7.3.

## Storage

Store at -20°C. DO NOT ALIQUOT

## Clonality

Monoclonal

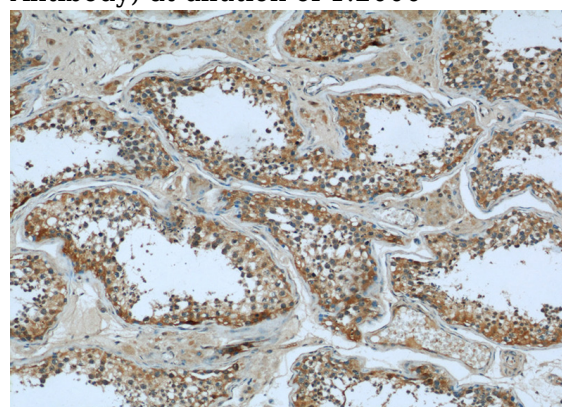
## Ig Type

Mouse IgG2a

## Applications

ELISA, IHC, IF, WB

## Dilutions

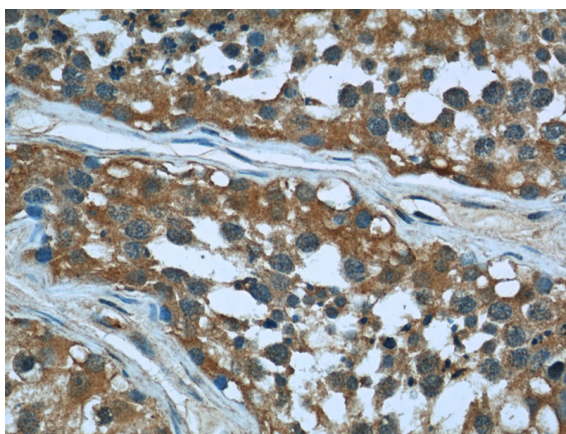


Immunohistochemical of paraffin-embedded human testis using Catalog No:107168(CFL1 antibody) at dilution of 1:50 (under 10x lens)

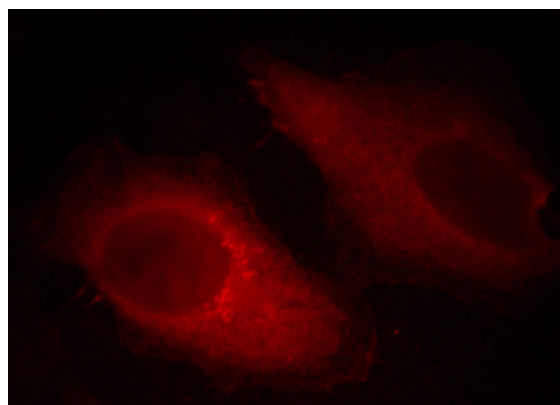
# Cofilin antibody

Catalog Number: 107168

---



Immunohistochemical of paraffin-embedded human testis using Catalog No:107168(CFL1 antibody) at dilution of 1:50 (under 40x lens)



Immunofluorescent analysis of HeLa cells, using CFL1 antibody Catalog No: at 1:50 dilution and Rhodamine-labeled goat anti-mouse IgG (red). Blue pseudocolor = DAPI (fluorescent DNA dye).