

ASS1 antibody

Catalog Number: 107068

Product name

ASS1 antibody

IHC: 1:20-1:200

IF: 1:20-1:200

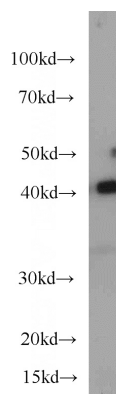
Specificity

Human; other species not tested.

Validations

Antibody description

ASS1 Mouse Monoclonal antibody. Positive IF detected in MCF-7 cells. Positive IHC detected in human liver tissue, human testis tissue. Positive WB detected in HeLa cells, human liver tissue. Observed molecular weight by Western-blot: 40-45kD



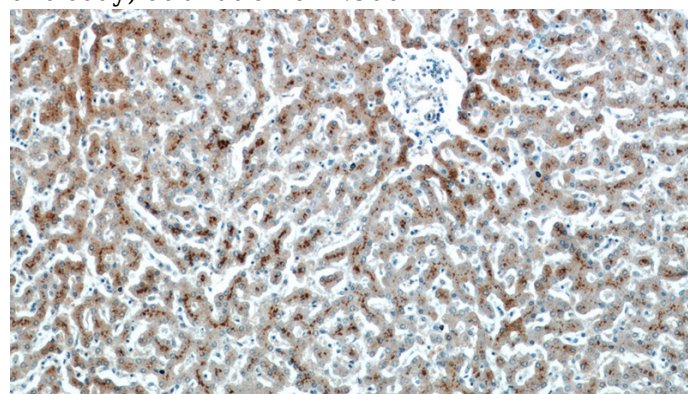
Preparation

This antibody was obtained by immunization of ASS1 recombinant protein (Accession Number: NM_054012). Purification method: Protein G purified.

HeLa cells were subjected to SDS PAGE followed by western blot with Catalog No:107068(ASS1 antibody) at dilution of 1:500

Formulation

PBS with 0.02% sodium azide and 50% glycerol pH 7.3.



Storage

Store at -20°C. DO NOT ALIQUOT

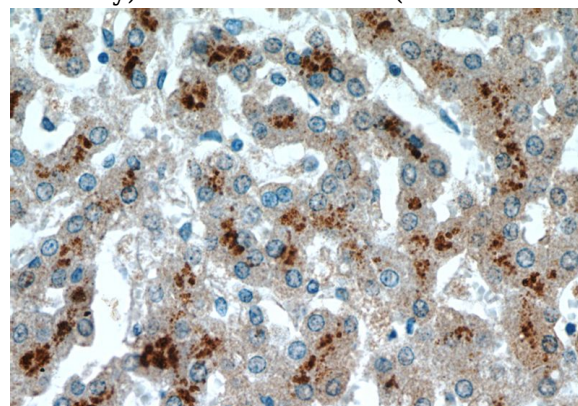
Clonality

Monoclonal

Immunohistochemical of paraffin-embedded human liver using Catalog No:107068(ASS1 antibody) at dilution of 1:50 (under 10x lens)

Ig Type

Mouse IgG1



Applications

ELISA, WB, IHC, IF

Dilutions

Recommended Dilution:

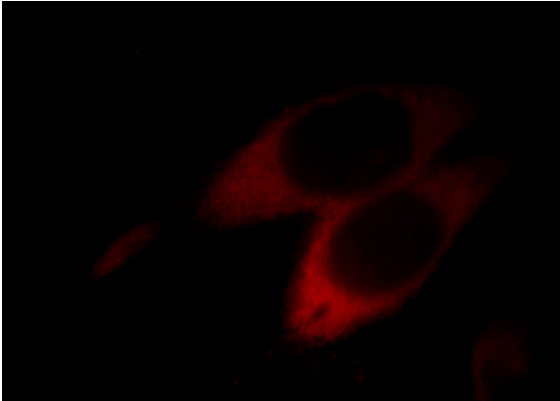
WB: 1:200-1:2000

Immunohistochemical of paraffin-embedded human liver using Catalog No:107068(ASS1

ASS1 antibody

Catalog Number: 107068

antibody) at dilution of 1:50 (under 40x lens)



Immunofluorescent analysis of MCF-7 cells, using ASS1 antibody Catalog No: at 1:50 dilution and Rhodamine-labeled goat anti-mouse IgG (red).