

# Anti-CD62L/L-Selectin antibody



Catalog Number: 106370

## Product name

Anti-CD62L/L-Selectin antibody

## Immunogen

[Human CD62L/L-Selectin \(His Tag\) recombinant protein](#)

## Specificity

Human CD62L / L-Selectin

## Antibody description

Mouse monoclonal to CD62L/L-Selectin

## Preparation

This antibody was produced from a hybridoma resulting from the fusion of a mouse myeloma with B cells obtained from a mouse immunized with purified, recombinant Human CD62L / L-Selectin (rh CD62L / L-Selectin; P14151-1; Met1-Asn332) and conjugated with PE under optimum conditions, the unreacted PE was removed.

## Formulation

Aqueous solution containing 0.5% BSA and 0.09% sodium azide

## Storage

This antibody is stable for 12 months from date of receipt when stored at 2°C-8°C. Protected from prolonged exposure to light. Do not freeze ! Sodium azide is toxic to cells and should be disposed of properly. Flush with large volumes of water during disposal.

## Clonality

Monoclonal

## Ig Type

Mouse IgG1

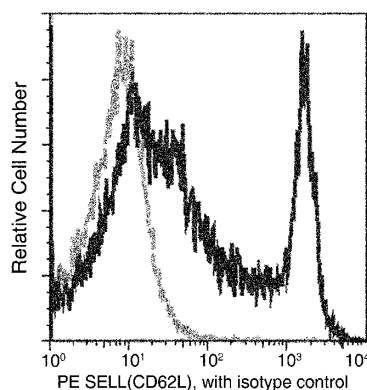
## Applications

FCM

## Dilutions

FCM

## Validations



CD62L / L-Selectin Antibody, Mouse MAb, Flow Cytometry

Flow cytometric analysis of Human SELL(CD62L) expression on human whole blood lymphocytes. Cells were stained with PE-conjugated anti-Human SELL(CD62L). The fluorescence histograms were derived from gated events with the forward and side light-scatter characteristics of viable lymphocytes.