

# Anti-Ly108/SLAMF6 antibody



Catalog Number: 106323

## Product name

Anti-Ly108/SLAMF6 antibody

## Immunogen

[Human Ly108/SLAMF6 \(His Tag\) recombinant protein](#)

## Specificity

Human Ly108 / SLAMF6

**No cross-reactivity** in ELISA with Human SLAMF7

## Antibody description

Rabbit monoclonal to Ly108/SLAMF6

## Preparation

This antibody was obtained from a rabbit immunized with purified, recombinant Human Ly108 / SLAMF6 (rh Ly108 / SLAMF6; Q96DU3-1; Met1-Met226).

## Formulation

0.2 µm filtered solution in PBS

## Storage

This antibody can be stored at 2°C-8°C for one month without detectable loss of activity. Antibody products are stable for twelve months from date of receipt when stored at -20°C to -80°C.

Preservative-Free.

Sodium azide is recommended to avoid contamination (final concentration 0.05%-0.1%). It is toxic to cells and should be disposed of properly. Avoid repeated freeze-thaw cycles.

## Clonality

Monoclonal

## Ig Type

Rabbit IgG

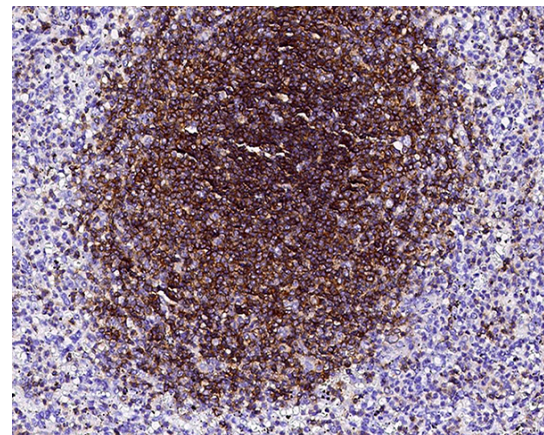
## Applications

IHC-P

## Dilutions

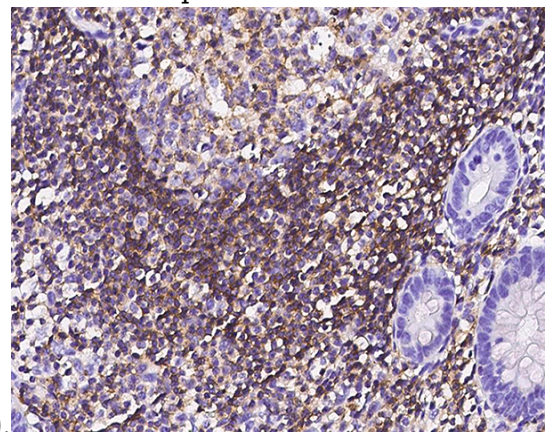
IHC-P: 1-10 µg/mL

## Validations



Ly108 / SLAMF6 Antibody, Rabbit MAb, Immunohistochemistry

Immunochemical staining of human SLAMF6 in human spleen with rabbit monoclonal antibody (5 µg/mL, formalin-fixed paraffin embedded



sections).

Ly108 / SLAMF6 Antibody, Rabbit MAb, Immunohistochemistry

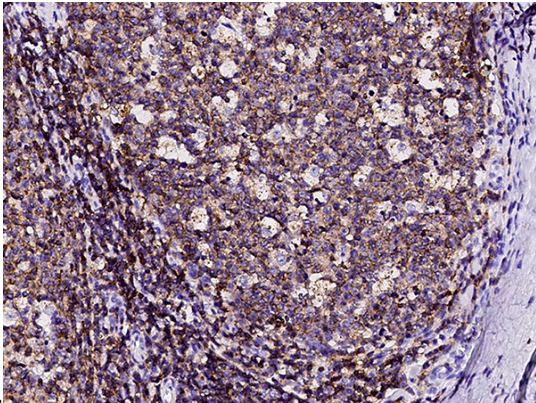
Immunochemical staining of human SLAMF6 in human appendix with rabbit monoclonal antibody (5 µg/mL, formalin-fixed paraffin embedded

# Anti-Ly108/SLAMF6 antibody



Catalog Number: 106323

---



Ly108 / SLAMF6 Antibody, Rabbit MAb,  
Immunohistochemistry

Immunochemical staining of human SLAMF6 in  
human tonsil with rabbit monoclonal antibody (5  
 $\mu\text{g}/\text{mL}$ , formalin-fixed paraffin embedded  
sections).

sections).