

Anti-BCL2L1/Bcl-XL antibody



Catalog Number: 106232

Product name

Anti-BCL2L1/Bcl-XL antibody

Immunogen

[Mouse BCL2L1/Bcl-XL \(aa 1-212, His Tag\) recombinant protein](#)

Specificity

Mouse Bcl-XL / BCL2L1

Antibody description

Rabbit polyclonal to BCL2L1/Bcl-XL

Preparation

Produced in rabbits immunized with purified, recombinant Mouse Bcl-XL / BCL2L1 (rM Bcl-XL / BCL2L1; Q64373-1; Met1-Arg212). Bcl-XL / BCL2L1 specific IgG was purified by Mouse Bcl-XL / BCL2L1 affinity chromatography.

Formulation

0.2 µm filtered solution in PBS with 5% trehalose

Storage

This antibody can be stored at 2°C-8°C for one month without detectable loss of activity. Antibody products are stable for twelve months from date of receipt when stored at -20°C to -80°C.

Preservative-Free.

Sodium azide is recommended to avoid contamination (final concentration 0.05%-0.1%). It is toxic to cells and should be disposed of properly. Avoid repeated freeze-thaw cycles.

Clonality

Polyclonal

Ig Type

Rabbit IgG

Applications

ELISA, IHC-P

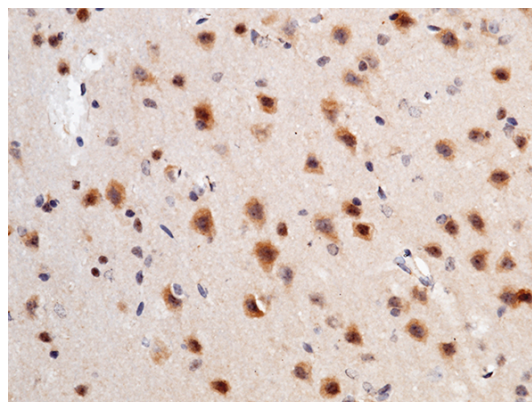
Dilutions

ELISA: 0.1-0.2 µg/mL

This antibody can be used at 0.1-0.2 µg/mL with the appropriate secondary reagents to detect Mouse Bcl-XL / BCL2L1. The detection limit for Mouse Bcl-XL / BCL2L1 is approximately 0.00975 ng/well.

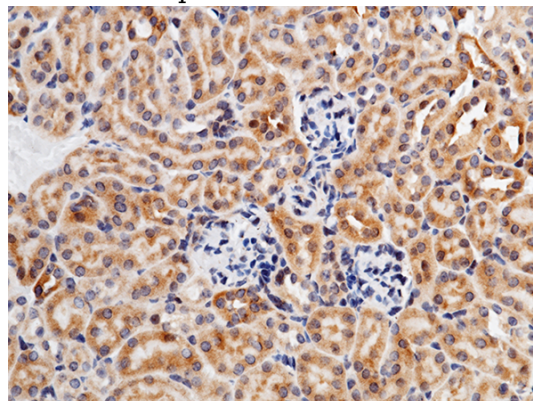
IHC-P: 0.1-2 µg/mL

Validations



Bcl-XL / BCL2L1 Antibody, Rabbit PAb, Antigen Affinity Purified, Immunohistochemistry

Immunochemical staining of mouse BCL2L1 in mouse brain with rabbit polyclonal antibody (1 µg/mL, formalin-fixed paraffin embedded



sections).

Bcl-XL / BCL2L1 Antibody, Rabbit PAb, Antigen

Anti-BCL2L1/Bcl-XL antibody



Catalog Number: 106232

Affinity Purified, Immunohistochemistry

Immunochemical staining of mouse BCL2L1 in mouse kidney with rabbit polyclonal antibody (1

µg/mL, formalin-fixed paraffin embedded sections). Positive staining was localized to nephric tubule.