

Anti-Podoplanin antibody



Catalog Number: 106225

Product name

Anti-Podoplanin antibody

Immunogen

[Mouse Podoplanin \(His Tag\) recombinant protein](#)

Specificity

Mouse PDPN / Podoplanin

Antibody description

Rabbit polyclonal to Podoplanin

Preparation

Produced in rabbits immunized with purified, recombinant Mouse PDPN / Podoplanin (rM PDPN / Podoplanin; NP_034459.2; Met1-Lys133). PDPN / Podoplanin specific IgG was purified by Mouse PDPN / Podoplanin affinity chromatography.

Formulation

0.2 µm filtered solution in PBS with 5% trehalose

Storage

This antibody can be stored at 2°C-8°C for one month without detectable loss of activity. Antibody products are stable for twelve months from date of receipt when stored at -20°C to -80°C.

Preservative-Free.

Sodium azide is recommended to avoid contamination (final concentration 0.05%-0.1%). It is toxic to cells and should be disposed of properly. Avoid repeated freeze-thaw cycles.

Clonality

Polyclonal

Ig Type

Rabbit IgG

Applications

ELISA, IHC-P

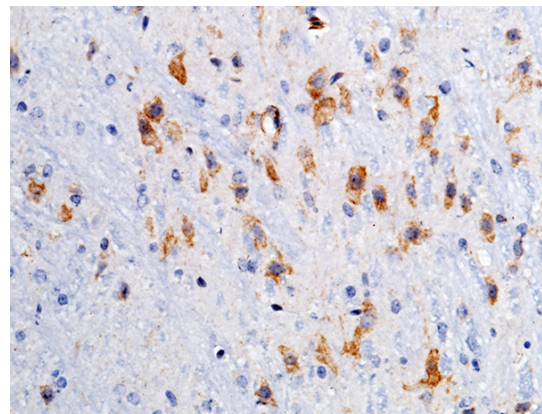
Dilutions

ELISA: 0.1-0.2 µg/mL

This antibody can be used at 0.1-0.2 µg/mL with the appropriate secondary reagents to detect Mouse PDPN / Podoplanin. The detection limit for Mouse PDPN / Podoplanin is approximately 0.00975 ng/well.

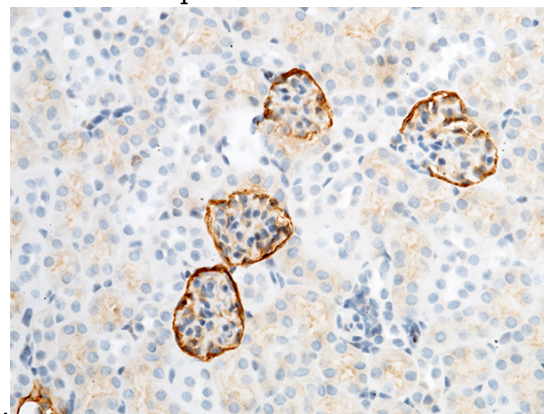
IHC-P: 0.1-2 µg/mL

Validations



Podoplanin / PDPN Antibody, Rabbit PAb, Antigen Affinity Purified, Immunohistochemistry

Immunochemical staining of mouse PDPN in mouse brain with rabbit polyclonal antibody (1 µg/mL, formalin-fixed paraffin embedded



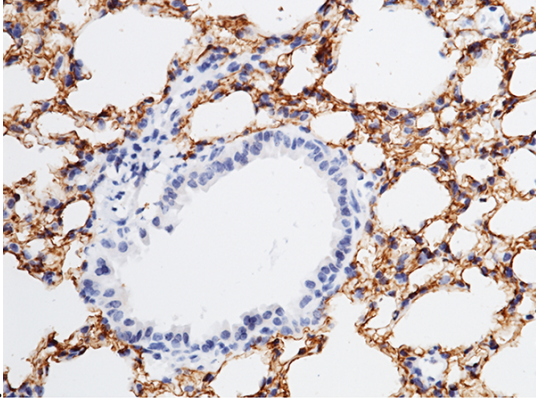
sections).

Podoplanin / PDPN Antibody, Rabbit PAb, Antigen Affinity Purified, Immunohistochemistry

Anti-Podoplanin antibody

Catalog Number: 106225

Immunochemical staining of mouse PDPN in mouse kidney with rabbit polyclonal antibody (1 $\mu\text{g}/\text{mL}$, formalin-fixed paraffin embedded



sections).

Podoplanin / PDPN Antibody, Rabbit PAb, Antigen Affinity Purified, Immunohistochemistry

Immunochemical staining of mouse PDPN in mouse lung with rabbit polyclonal antibody (1 $\mu\text{g}/\text{mL}$, formalin-fixed paraffin embedded sections).