

Anti-LRPAP1 antibody



Catalog Number: 106171

Product name

Anti-LRPAP1 antibody

Immunogen

[Mouse LRPAP1 \(His Tag\) recombinant protein](#)

Specificity

Mouse LRPAP1

Has cross-reactivity in ELISA with Human LRPAP1

Antibody description

Rabbit monoclonal to LRPAP1

Preparation

This antibody was obtained from a rabbit immunized with purified, recombinant Mouse LRPAP1 (rM LRPAP1; NP_038615.2; Gln29-Leu360).

Formulation

0.2 µm filtered solution in PBS with 5% trehalose

Storage

This antibody can be stored at 2°C-8°C for one month without detectable loss of activity. Antibody products are stable for twelve months from date of receipt when stored at -20°C to -80°C. Preservative-Free.

Sodium azide is recommended to avoid contamination (final concentration 0.05%-0.1%). It is toxic to cells and should be disposed of properly. Avoid repeated freeze-thaw cycles.

Clonality

Monoclonal

Ig Type

Rabbit IgG

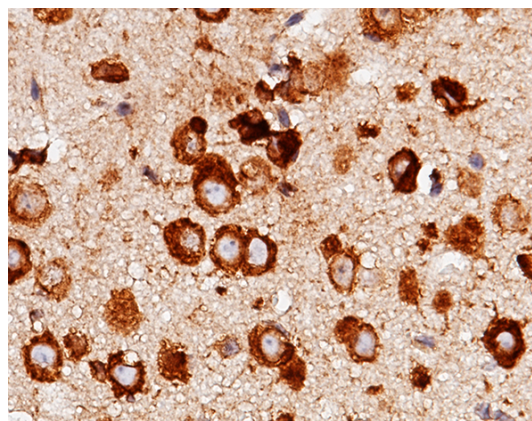
Applications

IHC-P

Dilutions

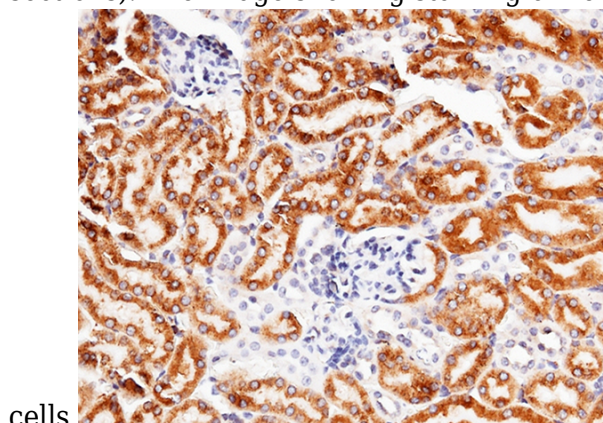
IHC-P: 0.5-5 µg/mL

Validations



LRPAP1 Antibody, Rabbit MAb, Immunohistochemistry

Immunochemical staining of mouse LRPAP1 in mouse brain with rabbit monoclonal antibody (5 µg/mL, formalin-fixed paraffin embedded sections). The image showing staining of nerve



LRPAP1 Antibody, Rabbit MAb, Immunohistochemistry

Immunochemical staining of mouse LRPAP1 in mouse kidney with rabbit monoclonal antibody (5 µg/mL, formalin-fixed paraffin embedded sections). The image showing staining of nephric tubule.