

Anti-FGF10 / KGF2 antibody



Catalog Number: 106126

Product name

Anti-FGF10 / KGF2 antibody

Immunogen

[Human FGF10 / KGF2 recombinant protein](#)

Specificity

Human FGF10 / KGF2

Antibody description

Rabbit polyclonal to FGF10 / KGF2

Preparation

Produced in rabbits immunized with purified, recombinant Human FGF10 / KGF2 (rh FGF10 / KGF2; NP_004456.1; Gln38-Ser208). FGF10 / KGF2 specific IgG was purified by Human FGF10 / KGF2 affinity chromatography.

Formulation

0.2 µm filtered solution in PBS

Storage

This antibody can be stored at 2°C-8°C for one month without detectable loss of activity. Antibody products are stable for twelve months from date of receipt when stored at -20°C to -80°C. Preservative-Free.

Sodium azide is recommended to avoid contamination (final concentration 0.05%-0.1%). It is toxic to cells and should be disposed of properly. Avoid repeated freeze-thaw cycles.

Clonality

Polyclonal

Ig Type

Rabbit IgG

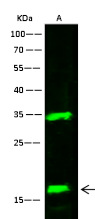
Applications

WB

Dilutions

WB: 5-10 µg/ml

Validations



Items	Lanes	A
Sample (whole cell lysate)		HeLa
Sample Volume (µg/lane)		30
Gel		13% SDS-PAGE reducing gel
Recommended Concentration		5-10 µg/ml
Secondary Antibody		Dylight 800-labeled Antibody To Rabbit IgG (H+L), at 1:3000 dilution.

FGF10 Antibody, Rabbit PAb, Antigen Affinity Purified, Western blot