

# Anti-Angiotensin-2 / ANG2 antibody



Catalog Number: 105992

## Product name

Anti-Angiotensin-2 / ANG2 antibody

## Immunogen

[Cynomolgus Angiotensin-2 / ANG2 \(His Tag\) recombinant protein](#)

## Specificity

Cynomolgus Angiotensin-2 / ANG2

## Antibody description

Rabbit polyclonal to Angiotensin-2 / ANG2

## Preparation

Produced in rabbits immunized with purified, recombinant Cynomolgus Angiotensin-2 / ANG2 (rh Angiotensin-2 / ANG2; XP\_005562585.1; Lys274-Phe495). Angiotensin-2 / ANG2 specific IgG was purified by Cynomolgus Angiotensin-2 / ANG2 affinity chromatography.

## Formulation

0.2 µm filtered solution in PBS

## Storage

This antibody can be stored at 2°C-8°C for one month without detectable loss of activity. Antibody products are stable for twelve months from date of receipt when stored at -20°C to -80°C.

Preservative-Free.

Sodium azide is recommended to avoid contamination (final concentration 0.05%-0.1%). It is toxic to cells and should be disposed of properly. Avoid repeated freeze-thaw cycles.

## Clonality

Polyclonal

## Ig Type

Rabbit IgG

## Applications

ELISA, WB, IP

## Dilutions

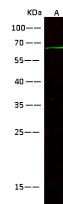
WB: 10-30 µg/ml

ELISA: 0.1-0.2 µg/mL

This antibody can be used at 0.1-0.2 µg/mL with the appropriate secondary reagents to detect Cynomolgus Angiotensin-2 / ANG2. The detection limit for Cynomolgus Angiotensin-2 / ANG2 is < 0.039 ng/well.

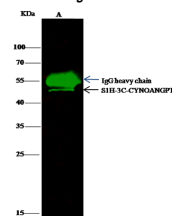
IP: 1-4 µg/mg of lysate

## Validations



Items	Lanes
Sample (whole cell lysate)	A HepG2
Sample Volume (µg/lane)	30
Gel	13% SDS-PAGE reducing gel
Recommended Concentration	10-30 µg/ml
Secondary Antibody	Dylight 800-labeled Antibody to Rabbit IgG (H+L), at 1:5000 dilution.
Developed using Odyssey imaging system.	
Explanation	Predicted band size : 57 kDa Observed band size : 65 kDa

Angiotensin-2 / ANG2 Antibody, Rabbit PAb, Antigen Affinity Purified, Western blot



Items	Lanes
Sample (whole cell lysate)	A HepG2
Sample quantity	0.5 mg
IP antibody quantity	2 µg
Protein G agarose	15 µl of 50% Protein G Agarose
Gel	13% SDS-PAGE reducing gel
Primary antibody	S1H-3C-CYNOANGPT2 antibody at 10 µg/ml
Secondary antibody	Dylight 800-labeled antibody to rabbit IgG (H+L), at 1:5000 dilution

Angiotensin-2 / ANG2 Antibody, Rabbit PAb, Antigen Affinity Purified, Immunoprecipitation