

Anti-PSPH antibody



Catalog Number: 105953

Product name

Anti-PSPH antibody

Immunogen

[Human PSPH recombinant protein](#)

Specificity

Human PSPH

Antibody description

Rabbit polyclonal to PSPH

Preparation

Produced in rabbits immunized with purified, recombinant Human PSPH (rh PSPH; P78330; Met1-Glu225). PSPH specific IgG was purified by Human PSPH affinity chromatography.

Formulation

0.2 µm filtered solution in PBS

Storage

This antibody can be stored at 2°C-8°C for one month without detectable loss of activity. Antibody products are stable for twelve months from date of receipt when stored at -20°C to -80°C.

Preservative-Free.

Sodium azide is recommended to avoid contamination (final concentration 0.05%-0.1%). It is toxic to cells and should be disposed of properly. Avoid repeated freeze-thaw cycles.

Clonality

Polyclonal

Ig Type

Rabbit IgG

Applications

ELISA, WB, IP

Dilutions

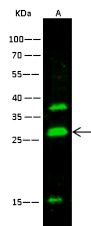
WB: 5-10 µg/ml

ELISA:0.1-0.2 µg/mL

This antibody can be used at 0.1-0.2 µg/mL with the appropriate secondary reagents to detect Human PSPH. The detection limit for Human PSPH is 0.00975 ng/well.

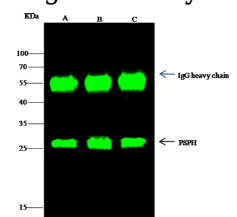
IP: 1-4 µg/mg of lysate

Validations



Items	Lanes	A
Sample (whole cell lysate)		K562
Sample Volume (µg/lane)		30
Gel		13% SDS-PAGE reducing gel
Recommended concentration		5-10 µg/ml
Secondary Antibody		Dylight 800 labeled Antibody to Rabbit IgG (H+L), at 1:5000 dilution.

PSPH Antibody, Rabbit PAb, Antigen Affinity



Items	Lanes	A	B	C
Sample (whole cell lysate)		K562	HepG2	MCF-7
Sample quantity		0.5 mg		
IP antibody quantity		2 µg		
Protein G agarose		15 µl of 50% Protein G Agarose		
Gel		13% SDS-PAGE reducing gel		
Primary antibody		PSPH antibody at 3 µg/ml		
Secondary antibody		Dylight 800-labeled antibody to rabbit IgG (H+L), at 1:5000 dilution.		

Purified, Western blot

PSPH Antibody, Rabbit PAb, Antigen Affinity
Purified, Immunoprecipitation