

# Anti-FcERI / FCER1A antibody



Catalog Number: 105311

## Product name

Anti-FcERI / FCER1A antibody

## Immunogen

[Human FcERI / FCER1A \(His Tag\) recombinant protein](#)

## Specificity

Human FcERI / FCER1A

## Antibody description

Rabbit polyclonal to FcERI / FCER1A

## Preparation

Produced in rabbits immunized with purified, recombinant Human FcERI / FCER1A (rh FcERI / FCER1A; P12319; Met1-Gln205). FcERI / FCER1A specific IgG was purified by Human FcERI / FCER1A affinity chromatography.

## Formulation

0.2  $\mu$ m filtered solution in PBS

## Storage

This antibody can be stored at 2°C-8°C for one month without detectable loss of activity. Antibody products are stable for twelve months from date of receipt when stored at -20°C to -80°C.

Preservative-Free.

Sodium azide is recommended to avoid contamination (final concentration 0.05%-0.1%). It is toxic to cells and should be disposed of properly. Avoid repeated freeze-thaw cycles.

## Clonality

Polyclonal

## Ig Type

Rabbit IgG

## Applications

ELISA, WB, IF, ICC/IF

## Dilutions

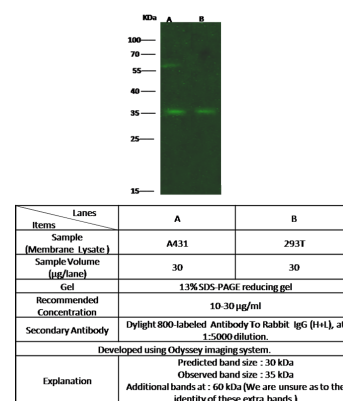
WB: 10-30  $\mu$ g/ml

ELISA: 0.1-0.2  $\mu$ g/ml

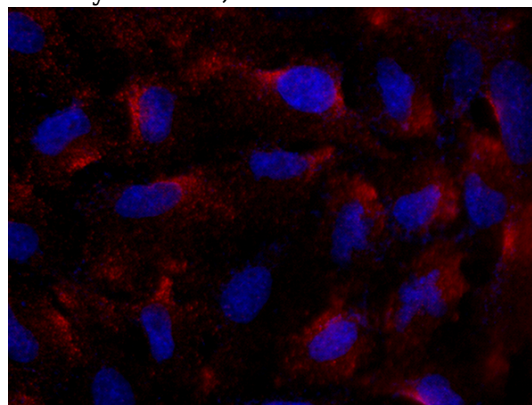
This antibody can be used at 0.1-0.2  $\mu$ g/ml with the appropriate secondary reagents to detect Human FcERI / FCER1A.

ICC/IF: 0.5-1.5  $\mu$ g/mL

## Validations



FcERI / FCER1A Antibody, Rabbit PAb, Antigen Affinity Purified, Western blot



FcERI / FCER1A Antibody, Rabbit PAb, Antigen Affinity Purified, Immunofluorescence

Immunofluorescence staining of FCER1A in A549 cells. Cells were fixed with 4% PFA, blocked with 10% serum, and incubated with rabbit anti-human

# Anti-FcERI / FCER1A antibody



Catalog Number: 105311

---

FCER1A polyclonal antibody (1 µg/ml) at 4°C

overnight. Then cells were stained with the Alexa Fluor®594-conjugate