

Anti-RUVBL1 / RVB1 antibody



Catalog Number: 105221

Product name

Anti-RUVBL1 / RVB1 antibody

Immunogen

[Human RUVBL1 / RVB1 \(His Tag\) recombinant protein](#)

Specificity

Human RUVBL1 / RVB1

Antibody description

Rabbit polyclonal to RUVBL1 / RVB1

Preparation

Produced in rabbits immunized with purified, recombinant Human RUVBL1 / RVB1 (rh RUVBL1 / RVB1; Q9Y265-1; Met1-Lys456). RUVBL1 / RVB1 specific IgG was purified by Human RUVBL1 / RVB1 affinity chromatography.

Formulation

0.2 µm filtered solution in PBS

Storage

This antibody can be stored at 2°C-8°C for one month without detectable loss of activity. Antibody products are stable for twelve months from date of receipt when stored at -20°C to -80°C.

Preservative-Free.

Sodium azide is recommended to avoid contamination (final concentration 0.05%-0.1%). It is toxic to cells and should be disposed of properly. Avoid repeated freeze-thaw cycles.

Clonality

Polyclonal

Ig Type

Rabbit IgG

Applications

ELISA, WB, IHC-P, IP

Dilutions

WB: 0.5-10 µg/ml

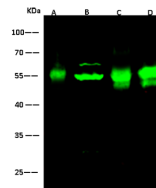
ELISA: 0.1-0.2 µg/ml

This antibody can be used at 0.1-0.2 µg/ml with the appropriate secondary reagents to detect Human RUVBL1 / RVB1. The detection limit for Human RUVBL1 / RVB1 is approximately < 0.039 ng/well.

IHC-P: 0.01-1 µg/mL

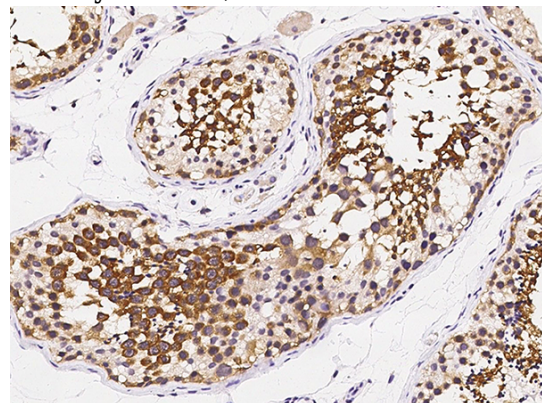
IP: 1-4 µg/mg of lysate

Validations



Lanes	A	B	C	D
Items				
Sample (whole cell lysate)	HepG2	Jurkat	MCF7	K562
Sample Volume (µg/lane)	30	30	30	30
Gel	13% SDS-PAGE reducing gel			
Recommended Concentration	0.5-10 µg/ml			
Secondary Antibody	Dylight 800 labeled Antibody To Rabbit Igs (H+L), at 1:5000 dilution			
Explanation	Developed using Odyssey imaging system. Predicted band size : 50 kDa Observed band size : 55 kDa Additional bands at : 68 kDa (We are unsure as to the identity of these extra bands. They are possible non-specific bindings).			

RUVBL1 / RVB1 Antibody, Rabbit PAb, Antigen Affinity Purified, Western blot



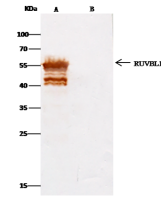
RUVBL1 / RVB1 Antibody, Rabbit PAb, Antigen Affinity Purified, Immunohistochemistry

Anti-RUVBL1 / RVB1 antibody



Catalog Number: 105221

Immunochemical staining of human RUVBL1 in human testis with rabbit polyclonal antibody (0.02 µg/mL, formalin-fixed paraffin embedded



Item	Lanes	A	B
Sample (Whole-cell lysate)	MCF-7		
Sample quantity	0.5 mg		
IP antibody type	His-RUVBL1-RV02		Rabbit blank IgG
IP antibody quantity	2 µg		
Protein G agarose	15 µl of 50% Protein G Agarose		
Gel	13% SDS-PAGE reducing gel		
Primary antibody	His-RUVBL1 antibody at 5 µg/ml		
Secondary antibody	Clever-tilot IP Detection Reagent (HRP) at 1:1000 dilution		

sections).

RUVBL1 / RVB1 Antibody, Rabbit PAb, Antigen Affinity Purified, Immunoprecipitation