

Anti-phosphomannomutase 2 / PMM2 / CDG1 antibody



Catalog Number: 105042

Product name

Anti-phosphomannomutase 2 / PMM2 / CDG1 antibody

Immunogen

[Human phosphomannomutase 2 / PMM2 / CDG1 \(His Tag\) recombinant protein](#)

Specificity

Human phosphomannomutase 2 / PMM2 / CDG1

Antibody description

Rabbit polyclonal to phosphomannomutase 2 / PMM2 / CDG1

Preparation

Produced in rabbits immunized with purified, recombinant Human phosphomannomutase 2 / PMM2 / CDG1 (rh phosphomannomutase 2 / PMM2 / CDG1; O15305; Met1-Ser246). phosphomannomutase 2 / PMM2 / CDG1 specific IgG was purified by Human phosphomannomutase 2 / PMM2 / CDG1 affinity chromatography.

Formulation

0.2 µm filtered solution in PBS

Storage

This antibody can be stored at 2°C-8°C for one month without detectable loss of activity. Antibody products are stable for twelve months from date of receipt when stored at -20°C to -80°C. Preservative-Free.

Sodium azide is recommended to avoid contamination (final concentration 0.05%-0.1%). It is toxic to cells and should be disposed of properly. Avoid repeated freeze-thaw cycles.

Clonality

Polyclonal

Ig Type

Rabbit IgG

Applications

ELISA, WB, IHC-P, IP

Dilutions

WB: 2-10 µg/ml

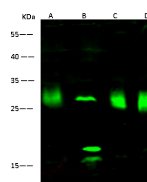
ELISA: 0.1-0.2 µg/mL

This antibody can be used at 0.1-0.2 µg/mL with the appropriate secondary reagents to detect Human phosphomannomutase 2 / PMM2 / CDG1. The detection limit for Human phosphomannomutase 2 / PMM2 / CDG1 is < 0.039 ng/well.

IHC-P: 0.1-1 µg/mL

IP: 0.5-2 µg/mg of lysate

Validations



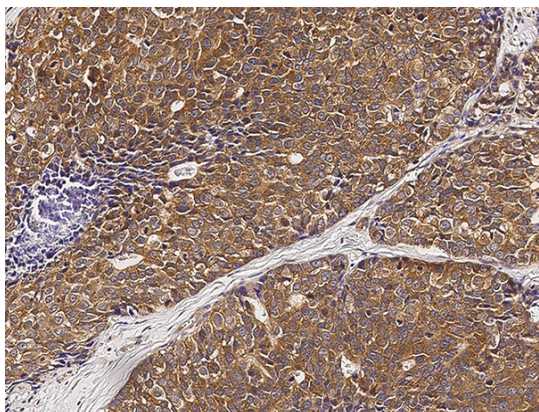
Lanes	A	B	C	D
Items				
Sample (whole cell lysate)	Hela	K562	MCF7	HepG2
Sample Volume (µg/lane)	30	30	30	30
Gel	13% SDS-PAGE reducing gel			
Recommended Concentration	2-10 µg/ml			
Secondary Antibody	Dylight 800-labeled Antibody To Rabbit IgG (H+L), at 1:5000 dilution.			
Explanation	Developed using Odyssey imaging system. Predicted band size : 28 kDa Observed band size : 28 kDa Additional bands at : 17 kDa and 16 kDa [We are unsure as to the identity of these extra bands. They are possible non-specific bindings].			

phosphomannomutase 2 / PMM2 / CDG1 Antibody, Rabbit PAb, Antigen Affinity Purified, Western blot

Anti-phosphomannomutase 2 / PMM2 / CDG1 antibody



Catalog Number: 105042



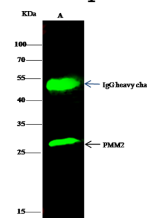
human breast carcinoma with rabbit polyclonal antibody (0.2 µg/mL, formalin-fixed paraffin

phosphomannomutase 2 / PMM2 / CDG1 Antibody, Rabbit PAb, Antigen Affinity Purified, Immunohistochemistry

Immunochemical staining of human PMM2 in

embedded sections).

phosphomannomutase 2 / PMM2 / CDG1 Antibody, Rabbit PAb, Antigen Affinity Purified, Immunoprecipitation



Lanes	A
Items	
Sample (whole cell lysate)	MCF-7
Sample quantity	0.5 mg
IP antibody quantity	2 µg
Protein G agarose	1.5 µl of 50% Protein G Agarose
Gel	1.5% SDS-PAGE reducing gel
Primary antibody	HC-PMM2 antibody at 5 µg/ml
Secondary antibody	Dylight 800-labeled antibody to rabbit IgG (D114), at 1:5000 dilution.