

# Anti-CKB / Creatine kinase B type antibody



Catalog Number: 104872

## Product name

Anti-CKB / Creatine kinase B type antibody

## Immunogen

[Human CKB / Creatine kinase B type \(His Tag\) recombinant protein](#)

## Specificity

Human CKB / Creatine kinase B type

## Antibody description

Rabbit polyclonal to CKB / Creatine kinase B type

## Preparation

Produced in rabbits immunized with purified, recombinant Human CKB / Creatine kinase B type (rh CKB / Creatine kinase B type; P12277; Pro2-Lys381). CKB / Creatine kinase B type specific IgG was purified by Human CKB / Creatine kinase B type affinity chromatography.

## Formulation

0.2 µm filtered solution in PBS

## Storage

This antibody can be stored at 2°C-8°C for one month without detectable loss of activity. Antibody products are stable for twelve months from date of receipt when stored at -20°C to -80°C.

Preservative-Free.

Sodium azide is recommended to avoid contamination (final concentration 0.05%-0.1%). It is toxic to cells and should be disposed of properly. Avoid repeated freeze-thaw cycles.

## Clonality

Polyclonal

## Ig Type

Rabbit IgG

## Applications

ELISA, WB, IP

## Dilutions

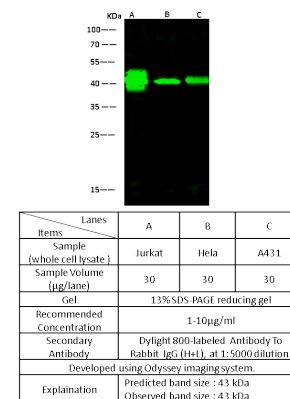
WB: 1-10 µg/ml

ELISA: 0.1-0.2 µg/mL

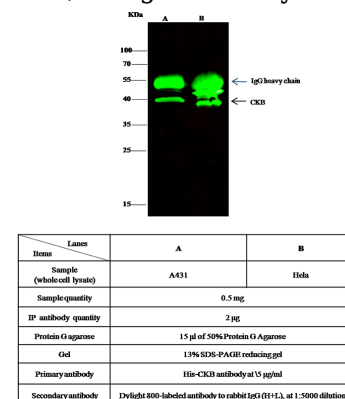
This antibody can be used at 0.1-0.2 µg/mL with the appropriate secondary reagents to detect Human CKB / Creatine kinase B type. The detection limit for Human CKB / Creatine kinase B type is < 0.039 ng/well.

IP: 1-4 µg/mg of lysate

## Validations



CKB / Creatine kinase B type Antibody, Rabbit PAb, Antigen Affinity Purified, Western blot



CKB / Creatine kinase B type Antibody, Rabbit PAb, Antigen Affinity Purified, Immunoprecipitation