

# Anti-Cyclophilin A antibody



Catalog Number: 104812

## Product name

Anti-Cyclophilin A antibody

## Immunogen

[Human Cyclophilin A \(His Tag\) recombinant protein](#)

## Specificity

Human Cyclophilin A

## Antibody description

Rabbit polyclonal to Cyclophilin A

## Preparation

Produced in rabbits immunized with purified, recombinant Human Cyclophilin A (rh Cyclophilin A; P62937; Met1-Glu165). Cyclophilin A specific IgG was purified by Human Cyclophilin A affinity chromatography.

## Formulation

0.2 µm filtered solution in PBS

## Storage

This antibody can be stored at 2°C-8°C for one month without detectable loss of activity. Antibody products are stable for twelve months from date of receipt when stored at -20°C to -80°C.

Preservative-Free.

Sodium azide is recommended to avoid contamination (final concentration 0.05%-0.1%). It is toxic to cells and should be disposed of properly. Avoid repeated freeze-thaw cycles.

## Clonality

Polyclonal

## Ig Type

Rabbit IgG

## Applications

ELISA, WB, IP

## Dilutions

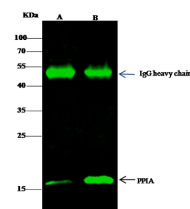
WB: 1-10 µg/mL

ELISA: 0.1-0.2 µg/mL

This antibody can be used at 0.1-0.2 µg/mL with the appropriate secondary reagents to detect Human Cyclophilin A. The detection limit for Human Cyclophilin A is < 0.039 ng/well.

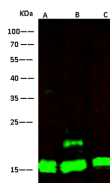
IP: 1-4 µg/mg of lysate

## Validations



Lanes	A	B
Items		
Sample (whole cell lysate)	HepG2	293T
Sample quantity	0.5 mg	
IP antibody quantity	2 µg	
Protein G agarose	15 µl of 50% Protein G Agarose	
Gel	13% SDS-PAGE reducing gel	
Primary antibody	PPA-His antibody at 2 µg/ml	
Secondary antibody	Dylight 800-labeled antibody to rabbit IgG (H+L), at 1:5000 dilution	

## Cyclophilin A Antibody, Rabbit PAb, Antigen Affinity Purified, Immunoprecipitation



Lanes	A	B	C
Items			
Sample (whole cell lysate)	HepG2	Jurkat	NIH-3T3
Sample Volume (µg/lane)	30	30	30
Gel	13% SDS-PAGE reducing gel		
Recommended Concentration	1-10 µg/ml		
Secondary Antibody	Dylight 800-labeled Antibody to Rabbit IgG (H+L), at 1:5000 dilution.		
Antibody	Developed using Odyssey imaging system.		
Explanation	Predicted band size : 18 kDa Observed band size : 18 kDa Additional bands at : 20 kDa (We are unsure as to the identity of these extra bands. They are possible non-specific bindings).		

## Cyclophilin A Antibody, Rabbit PAb, Antigen Affinity Purified, Western blot