

# Anti-CD22 antibody

Catalog Number: 104687

## Product name

Anti-CD22 antibody

## Immunogen

[Rat CD22 \(His Tag\) recombinant protein](#)

## Specificity

Rat CD22

## Antibody description

Rabbit polyclonal to CD22

## Preparation

Produced in rabbits immunized with purified, recombinant Rat CD22 (rR CD22; NP\_001100973.1; Met1-Arg692). CD22 specific IgG was purified by Rat CD22 affinity chromatography.

## Formulation

0.2 µm filtered solution in PBS

## Storage

This antibody can be stored at 2°C-8°C for one month without detectable loss of activity. Antibody products are stable for twelve months from date of receipt when stored at -20°C to -80°C.

Preservative-Free.

Sodium azide is recommended to avoid contamination (final concentration 0.05%-0.1%). It is toxic to cells and should be disposed of properly. Avoid repeated freeze-thaw cycles.

## Clonality

Polyclonal

## Ig Type

Rabbit IgG

## Applications

ELISA, IHC-P

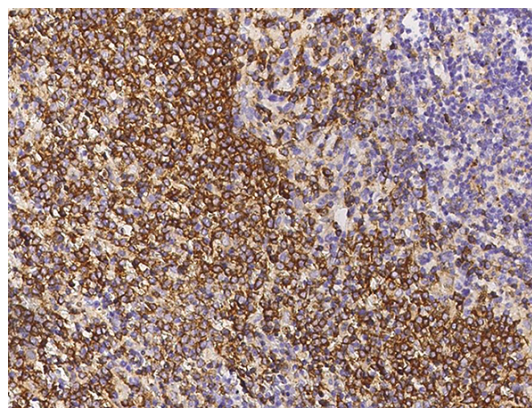
## Dilutions

ELISA: 0.1-0.2 µg/ml

This antibody can be used at 0.1-0.2 µg/ml with the appropriate secondary reagents to detect Rat CD22.

IHC-P: 0.1-2 µg/mL

## Validations



CD22 Antibody, Rabbit PAb, Antigen Affinity Purified, Immunohistochemistry

Immunochemical staining of rat CD22 in rat spleen with rabbit polyclonal antibody (1 µg/mL, formalin-fixed paraffin embedded sections).