

Anti-RPRD1B antibody



Catalog Number: 104683

Product name

Anti-RPRD1B antibody

Immunogen

[Human RPRD1B \(His Tag\) recombinant protein](#)

Specificity

Human RPRD1B

Antibody description

Rabbit polyclonal to RPRD1B

Preparation

Produced in rabbits immunized with purified, recombinant Human RPRD1B (rh RPRD1B; AAH33629.1; Met1-Asp326). RPRD1B specific IgG was purified by Human RPRD1B affinity chromatography.

Formulation

0.2 μ m filtered solution in PBS

Storage

This antibody can be stored at 2°C-8°C for one month without detectable loss of activity. Antibody products are stable for twelve months from date of receipt when stored at -20°C to -80°C.

Preservative-Free.

Sodium azide is recommended to avoid contamination (final concentration 0.05%-0.1%). It is toxic to cells and should be disposed of properly. Avoid repeated freeze-thaw cycles.

Clonality

Polyclonal

Ig Type

Rabbit IgG

Applications

WB, IHC-P, IP

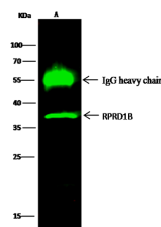
Dilutions

WB: 2-10 μ g/mL

IHC-P: 0.05-0.2 μ g/mL

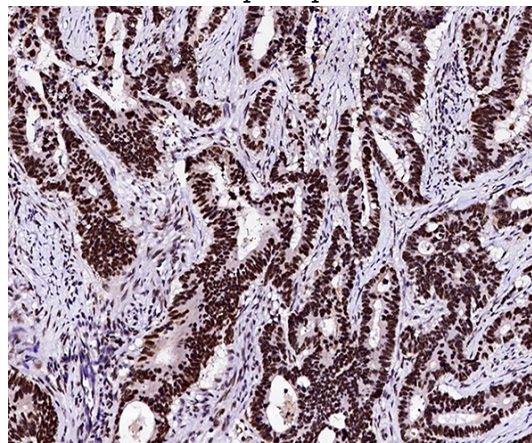
IP: 1-4 μ g/mg of lysate

Validations



Items	Lanes	A
Sample (whole cell lysate)		HepG2
Sample quantity		0.5 mg
IP antibody quantity		2 μ g
Protein G agarose		1.5 μ l of 50% Protein G Agarose
Gel		13% SDS-PAGE reducing gel
Primary antibody		His-RPRD1B antibody at 2 μ g/ml
Secondary antibody		DyLight 800-labeled antibody to rabbit IgG (H+L), at 1:5000 dilution

RPRD1B Antibody, Rabbit PAb, Antigen Affinity Purified, Immunoprecipitation



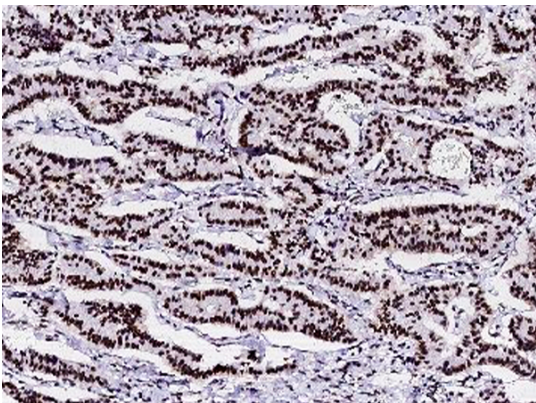
RPRD1B Antibody, Rabbit PAb, Antigen Affinity Purified, Immunohistochemistry

Immunochemical staining of human RPRD1B in human colon carcinoma with rabbit polyclonal antibody (0.1 μ g/mL, formalin-fixed paraffin embedded sections).

Anti-RPRD1B antibody

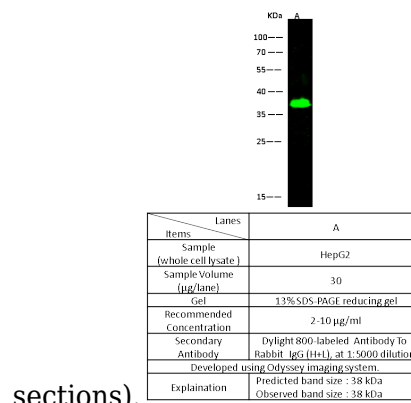


Catalog Number: 104683



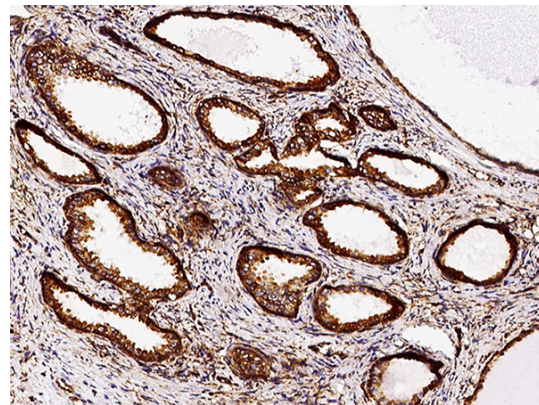
RPRD1B Antibody, Rabbit PAb, Antigen Affinity Purified, Immunohistochemistry

Immunochemical staining of human RPRD1B in human hepatoma with rabbit polyclonal antibody (0.1 µg/mL, formalin-fixed paraffin embedded



sections).

RPRD1B Antibody, Rabbit PAb, Antigen Affinity Purified, Western blot



RPRD1B Antibody, Rabbit PAb, Antigen Affinity Purified, Immunohistochemistry