

Anti-ECH1 antibody



Catalog Number: 104637

Product name

Anti-ECH1 antibody

Immunogen

[Human ECH1 \(His Tag\) recombinant protein](#)

Specificity

Human ECH1

Antibody description

Rabbit polyclonal to ECH1

Preparation

Produced in rabbits immunized with purified, recombinant Human ECH1 (rh ECH1; Q13011; Thr34-Leu328). ECH1 specific IgG was purified by Human ECH1 affinity chromatography.

Formulation

0.2 µm filtered solution in PBS

Storage

This antibody can be stored at 2°C-8°C for one month without detectable loss of activity. Antibody products are stable for twelve months from date of receipt when stored at -20°C to -80°C.

Preservative-Free.

Sodium azide is recommended to avoid contamination (final concentration 0.05%-0.1%). It is toxic to cells and should be disposed of properly. Avoid repeated freeze-thaw cycles.

Clonality

Polyclonal

Ig Type

Rabbit IgG

Applications

ELISA, WB, IHC-P, IP

Dilutions

WB: 5-10 µg/mL

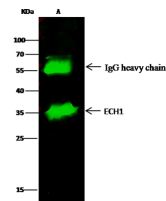
ELISA: 0.1-0.2 µg/mL

This antibody can be used at 0.1-0.2 µg/mL with the appropriate secondary reagents to detect Human ECH1. The detection limit for Human ECH1 is < 0.039 ng/well.

IHC-P: 0.1-1 µg/mL

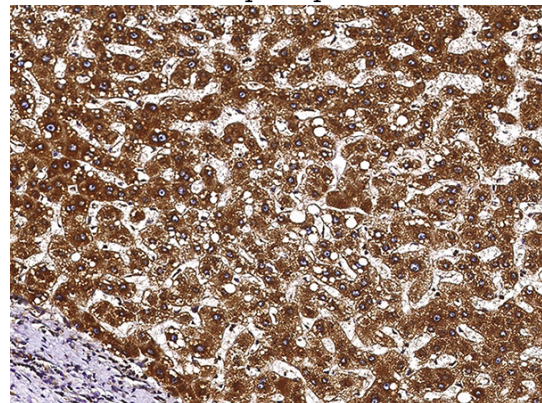
IP: 0.5-2 µg/mg of lysate

Validations



Items	Lanes	A
Sample (whole cell lysate)		HepG2
Sample quantity		0.5 mg
IP antibody quantity		2 µg
Protein G agarose		1.5 µl of 50% Protein G Agarose
Gel		15% SDS-PAGE reducing gel
Primary antibody		His-ECH1 antibody at 5 µg/ml
Secondary antibody		Dylight 800-labeled antibody to rabbit IgG (1:1), at 1:5000 dilution

ECH1 Antibody, Rabbit PAb, Antigen Affinity Purified, Immunoprecipitation



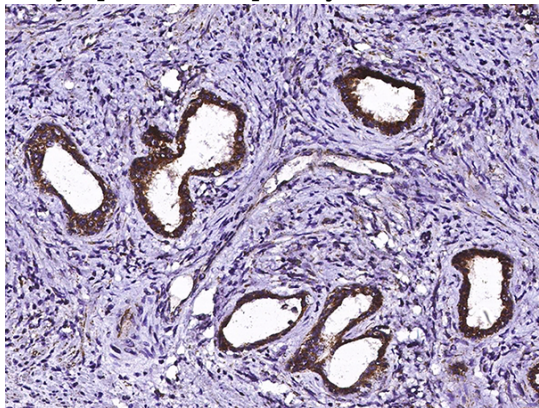
ECH1 Antibody, Rabbit PAb, Antigen Affinity Purified, Immunohistochemistry

Immunochemical staining of human ECH1 in human liver(cirrhosis) with rabbit polyclonal

Anti-ECH1 antibody

Catalog Number: 104637

antibody (0.1 µg/mL, formalin-fixed paraffin embedded sections). Positive staining was localized to cytoplasm of hepatocyte

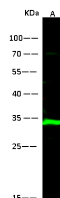


ECH1 Antibody, Rabbit PAb, Antigen Affinity Purified, Immunohistochemistry

Immunochemical staining of human ECH1 in human prostate with rabbit polyclonal antibody (0.1 µg/mL, formalin-fixed paraffin embedded

sections).

ECH1 Antibody, Rabbit PAb, Antigen Affinity Purified, Western blot



Items	Lanes	A
Sample (whole cell lysate)		HepG2
Sample Volume (µg/lane)		30
Gel		13% SDS-PAGE reducing gel
Recommended Concentration		5-10 µg/ml
Secondary Antibody		Dylight 800-labeled Antibody to Rabbit IgG (1:4), at 1:5000 dilution. Developed using Odyssey imaging system.
Explanation		Predicted band size : 36 kDa Observed band size : 34 kDa