

Anti-C4.4A/LYPD3 antibody



Catalog Number: 104571

Product name

Anti-C4.4A/LYPD3 antibody

Immunogen

[Human C4.4A/LYPD3 \(His Tag\) recombinant protein](#)

Specificity

Human C4.4A / LYPD3

Antibody description

Rabbit monoclonal to C4.4A/LYPD3

Preparation

This antibody was obtained from a rabbit immunized with purified, recombinant Human C4.4A / LYPD3 (rh C4.4A / LYPD3; NP_055215.2; Met1-His286) and conjugated with APC under optimum conditions, the unreacted APC was removed.

Formulation

Aqueous solution containing 0.5% BSA and 0.09% sodium azide

Storage

This antibody is stable for 12 months from date of receipt when stored at 2°C-8°C. Protected from prolonged exposure to light. Do not freeze !

Sodium azide is toxic to cells and should be disposed of properly. Flush with large volumes of water during disposal.

Clonality

Monoclonal

Ig Type

Rabbit IgG

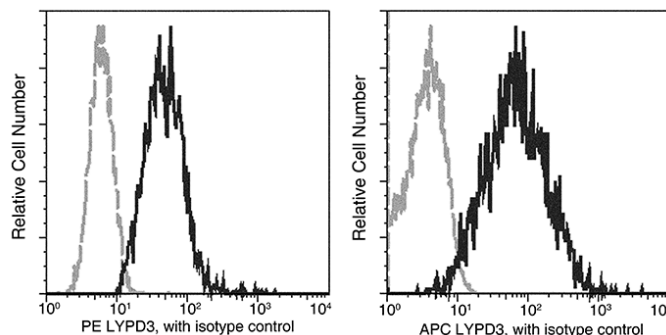
Applications

FCM

Dilutions

FCM

Validations



C4.4A / LYPD3 Antibody (APC), Rabbit MAb, Flow cytometric analysis

Flow cytometric analysis of Human LYPD3 expression on PC-3 cells.