

# Anti-Syndecan-1/SDC1/CD138 antibody



Catalog Number: 104094

## Product name

Anti-Syndecan-1/SDC1/CD138 antibody

## Immunogen

[Human Syndecan-1/SDC1/CD138 \(His Tag\) recombinant protein](#)

## Specificity

Human Syndecan-1 / SDC1 / CD138

## Antibody description

Rabbit polyclonal to Syndecan-1/SDC1/CD138

## Preparation

Produced in rabbits immunized with purified, recombinant Human Syndecan-1 / SDC1 / CD138 (rh Syndecan-1 / SDC1 / CD138; NP\_002988.3; Met 1-Glu 251). Syndecan-1 / SDC1 / CD138 specific IgG was purified by Human Syndecan-1 / SDC1 / CD138 affinity chromatography.

## Formulation

0.2 µm filtered solution in PBS with 5% trehalose

## Storage

This antibody can be stored at 2°C-8°C for one month without detectable loss of activity. Antibody products are stable for twelve months from date of receipt when stored at -20°C to -80°C.

Preservative-Free.

Sodium azide is recommended to avoid contamination (final concentration 0.05%-0.1%). It is toxic to cells and should be disposed of properly. Avoid repeated freeze-thaw cycles.

## Clonality

Polyclonal

## Ig Type

Rabbit IgG

## Applications

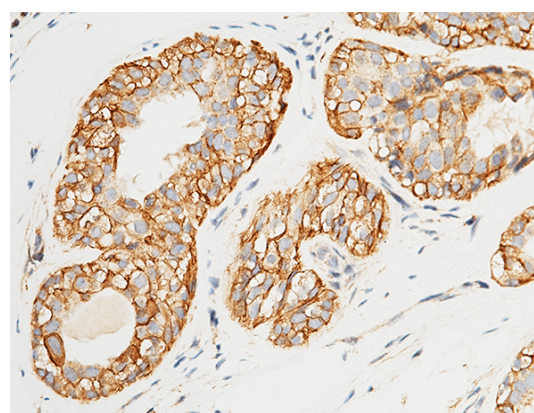
WB, IHC-P

## Dilutions

WB: 2-5 µg/mL

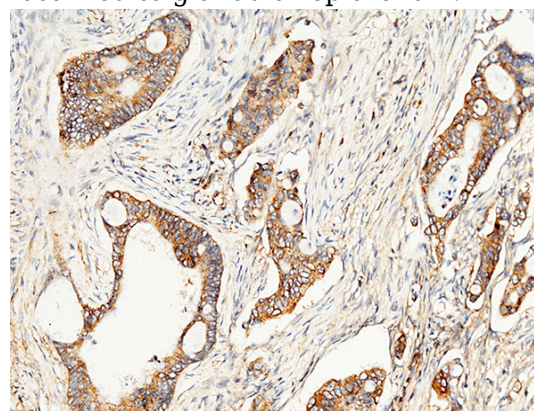
IHC-P: 0.1-2 µg/mL

## Validations



Syndecan-1 / SDC1 / CD138 Antibody, Rabbit PAb, Antigen Affinity Purified, Immunohistochemistry

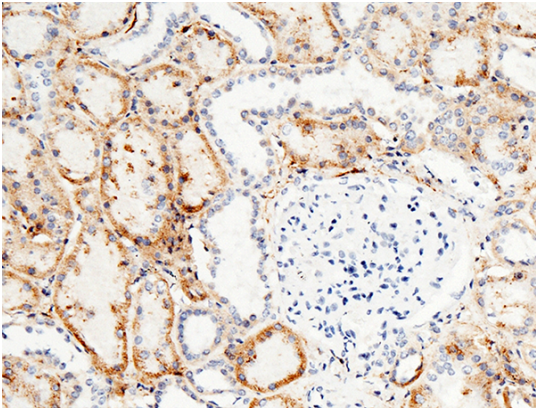
Immunochemical staining of human SDC1 in human breast cancer with rabbit polyclonal antibody (1 µg/mL, formalin-fixed paraffin embedded sections). Positive staining was localized to glandular epithelium.



Syndecan-1 / SDC1 / CD138 Antibody, Rabbit PAb, Antigen Affinity Purified, Immunohistochemistry

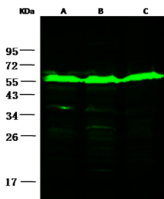
Immunochemical staining of human SDC1 in human colon cancer with rabbit polyclonal

antibody (1 µg/mL, formalin-fixed paraffin embedded sections). Positive staining was localized to glandular epithelium.



Syndecan-1 / SDC1 / CD138 Antibody, Rabbit PAb, Antigen Affinity Purified, Immunohistochemistry

Immunochemical staining of human SDC1 in human kidney with rabbit polyclonal antibody (1 µg/mL, formalin-fixed paraffin embedded



	A	B	C
Sample (whole cell lysate)	HeLa	293T	MCF-7
Sample Volume (µg/lane)	30		
Gel	13% SDS-PAGE reducing gel		
Recommended Concentration	2.5 µg/ml		
Secondary Antibody	Dylight 800-labeled Antibody To Rabbit IgG (H+L), at 1:5000 dilution		

sections).

Syndecan-1 / SDC1 / CD138 Antibody, Rabbit PAb, Antigen Affinity Purified, Western blot